

LSL-11 SERVICE INSTRUCTIONS

PRODUCT DESCRIPTION

THE LSL-11 INJECTOR IS DESIGNED FOR HIGH OUTPUT APPLICATIONS UTILIZING OIL OR GREASE LUBRICANT. THIS IS A STANDALONE INJECTOR WITH AN 1/2 NPTF INLET CONNECTION AND A 1/4 NPSF OUTLET. THE LSL-11 IS AVAILABLE IN ZINC PLATED CARBON STEEL, 303 STAINLESS STEEL, AND 316 STAINLESS STEEL.

SPECIFICATIONS

FOR: OIL AND GREASE

OUTPUT: ADJUSTABLE OUTPUT FROM .05 CI TO .50 CI

PRESSURE: MAXIMUM/MINIMUM OPERATING PRESSURE 5000 PSI/1000 PSI

OUTPUT ADJUSTMENT

FACTORY OUTPUT IS SET AT .50 CI, MAX OUTPUT. FOR MINIMUM OUTPUT OF .05 CI, TURN THE HEX NUT CLOCKWISE INTO THE INJECTOR UNTIL IT BOTTOMS OUT (HAND TIGHT ONLY). FOR ACCURATE OUTPUT ADJUSTMENT, ROTATE THE HEX SCREW CLOCKWISE UNTIL IT BOTTOMS OUT, THEN ROTATE UNTIL THE DESIRED OUTPUT IS REACHED.

.05 CI TO .50 CI = **12.75 FULL TURNS**

1 FULL TURN = APPROXIMATELY **0.035 CI**



DISASSEMBLY INSTRUCTIONS

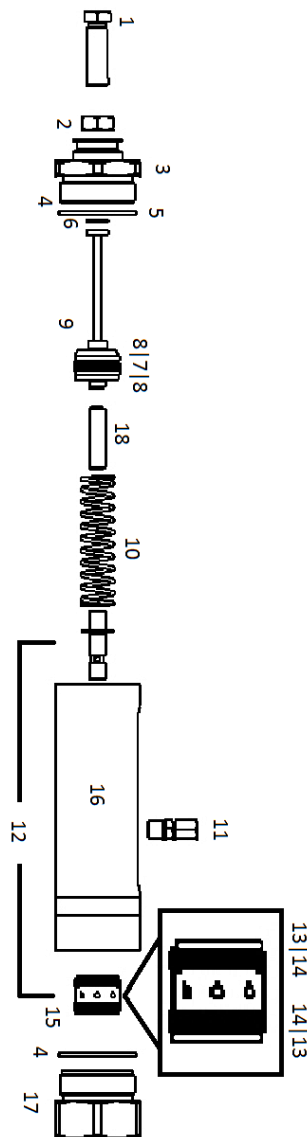
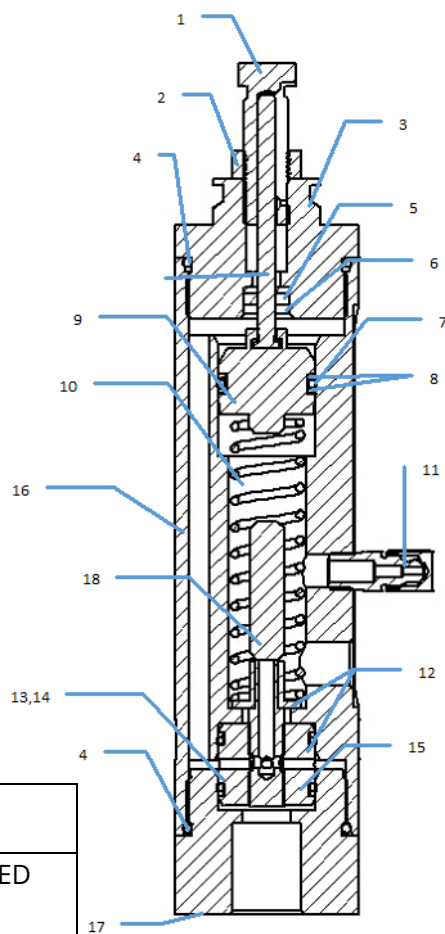
STEP 1: First, remove the adjustment adapter from the top of the injector body (3). Remove its contents; piston assembly, spring, and spacer.

STEP 2: Next remove the inlet adapter from the from the bottom of the injector body (17).

Remove the slide valve (12), by first turning the injector upside down. Push out the upper portion of the assembly with a stick like object from the inlet side of the injector. It should fall out towards the adjustment adapter.

STEP 3: Remove the valve body by lightly tapping a wooded dowel through the top of the injector body making contact with the valve body. The dowel may be no bigger than 1/2" in diameter.

STEP 4: To remove the indicator stem packing from the adjustment adapter, remove the adjustment screw from the adjustment adapter. Use a hard object to gently push through the screw hole and out through the bottom of the adapter.



NOTE: "XXX" SPECIFIES MATERIAL OF THE INJECTOR FOR:

CRS USE: -000

303 SS USE: -303

316 SS USE: -316

EXAMPLE:

FOR 303 SS ADJUSTMENT SCREW

USE: LSL85497-001-303

ORDERING SERVICE KITS

LSL-11RK	SEAL KIT—INCLUDES HIGHLIGHTED ITEMS EXCEPT ITEM #12
LSL-11MRK	REBUILD KIT—INCLUDES ALL HIGHLIGHTED ITEMS

Item No.	Description	Qty.	Part No.
1	Adjusting Screw	1	LSL85497-001-XXX
2	Lock Nut	1	LSL85497-010
3	Adjustment Adapter	1	LSL85497-003-XXX
4	O-ring (viton)	2	LSL85497-004
5	Washer	1	LSL85497-009
6	Packing (SKF)	1	LSL85497-006
7	Quad Ring (Quniton)	1	LSL85497-007Q
8	Back-up ring (teflon)	2	LSL85497-007BR
9	Piston Ass'y	1	LSL85497-008-QA
10	Plunger Spring	1	LDL85497-013
11	Fitting Ass'y	1	L90471-XXX
12	Slide Valve Ass'y	1	LSL85497-025A
13	Back-up ring (teflon)	2	LSL85497-005BR
14	Quad Ring (Quniton)	2	LSL85497-005Q
15	Valve Body	1	LSL85497-014
16	Injector Body	1	LSL85497-015
17	Inlet Adapter	1	LSL85497-016
18	Spacer	1	LSL85497-017

LSL-11 SERVICE INSTRUCTIONS

REASSEMBLY INSTRUCTIONS

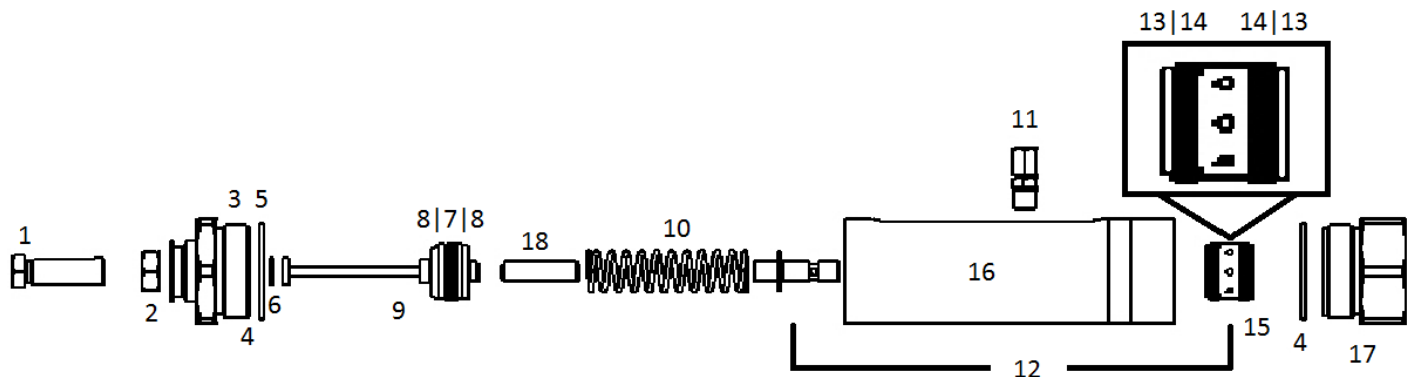
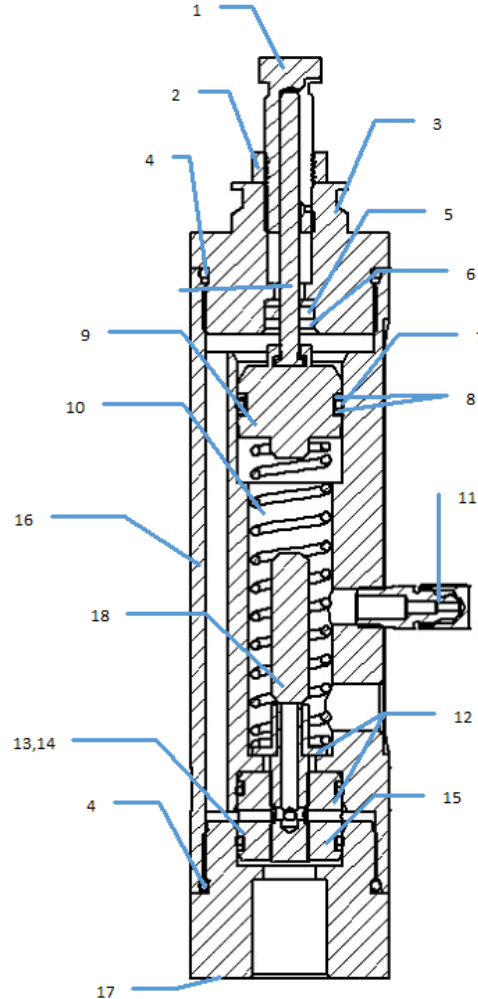
STEP 1: Clean all injector components and inspect for wear. Replace parts and O-rings as necessary.

STEP 2: Install O-rings and backup rings on the outside of the valve body (13 & 14). Apply grease to the seals and valve body and insert the valve body into the inlet adapter.

STEP 3: Install O-ring onto the inlet adapter (item #4) and install the inlet adapter into the injector body. Hand tight to ensure everything seats properly and tighten.

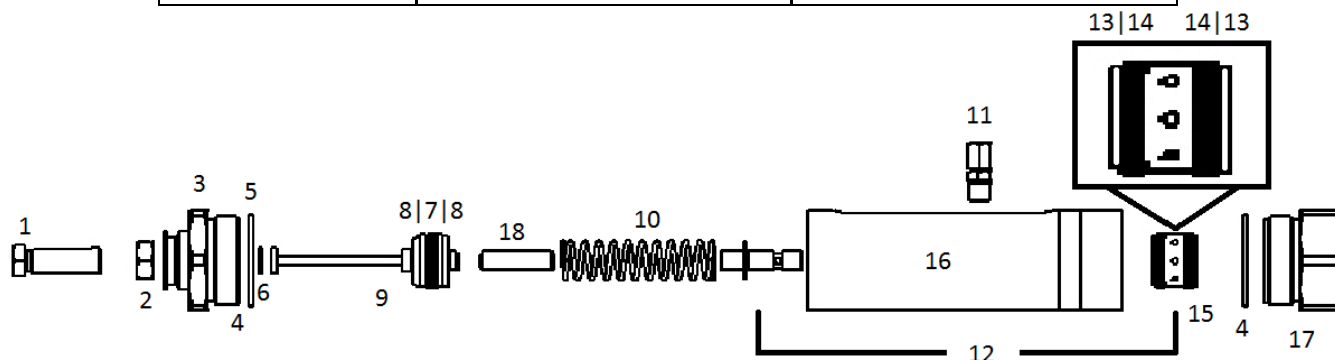
STEP 4: Apply grease to the slide valve assembly once reassembled (12) and insert through the top of the injector body into the valve body. Apply grease to the piston bore in the injector body. Drop in the spring and the spacer inside the spring.

STEP 5: Install the O-ring on the piston assembly and apply grease to the piston, O-Ring, and indicator rod. Insert into the injector body. Install O-ring on adjustment adapter (3), install washer, and packing. Apply grease to the O-ring on the adjustment adapter and slide over the pre-assembled adapter into the injector body. Hand tight to make sure everything is properly seated. Tighten with a wrench.



LSL-11 SERVICE INSTRUCTIONS

TROUBLESHOOTING GUIDE		
PROBLEM	AREA AFFECTED	REMEDY
POOR LUBRICANT FLOW TO BEARING	OUTPUT IS SET LOW	ADJUST TO PROPER SETTING AND LOCK WITH NUT (SEE
	WORN OR DAMAGED SLIDE VALVE BODY O-RINGS	REPLACE O-RING AND BACKUP RINGS (14, 15)
	PLUNGER SPRING BROKEN OR WORN	REPLACE SPRING (10)
TOO MUCH LUBRICANT FLOW TO BEARING	OUTPUT IS SET LOW	ADJUST TO PROPER SETTING AND LOCK WITH NUT (SEE
	WORN OR DAMAGED UPPER SLIDE VALVE BODY O-RING	REPLACE O-RINGS AND BACKUP RINGS (14,15)
	PLUNGER SPRING BROKEN	REPLACE SPRING (10)
	WORN OR DAMAGED SLIDE VALVE ASSEMBLY	REPLACE SLIDE VALVE ASSEMBLY
EXTERNAL LEAKAGE INJECTOR BODY	DAMAGED O-RINGS	REPLACE O-RINGS (4)
LEAKAGE AT FITTING ASSEMBLY	LOOSE CAP	TIGHTEN CAP
EXTERNAL LEAKAGE AT INDICATOR ROD	WORN OR DAMAGED INDICATOR PACKING	REPLACE PACKING (6)



NOTES



LUBRICATION SCIENTIFICS, LLC

17651 ARMSTRONG AVE.

IRVINE, CA 92614

UNITED STATES OF AMERICA

TEL: (714) 557-0664 FAX: (714)546-4564

WWW.LUBRICATIONSCIENTIFICS.COM