



SPIN-ON CARTRIDGE FILTER



PRODUCT DESCRIPTION

LOW PRESSURE, HIGH FLOW, SPIN-ON FILTER
ELEMENT

3/4—16" NPT THREADED INTERFACE TO OIL FILTER

OIL ONLY APPLICATIONS AT 150 PSI MAX PRESSURE
AT 250

DEGREES FAHRENHEIT

10, 25, AND 150 MICRONS AVAILABLE. ACCEPTS MOST
AUTOMOTIVE OIL FILTERS WITH A 3/4—16" NPT
CONNECTION

INLET/OUTLET PORTS ARE 3/8" NPSF CONNECTIONS,
MOUNTING HOLES ARE 1/4-20"

3/4" CLEARANCE NEEDED TO REMOVE AND INSTALL
FILTER

BENEFITS & FEATURES

PROVIDES ACCESS TO AN INEXPENSIVE,
EASY TO MAINTAIN FILTRATION UNIT FOR
LOW PRESSURE OIL APPLICATIONS

DESIGNED FOR HIGH FLOW FILTRATION

COMPATIBLE WITH PETROLEUM BASED
OIL IN MOBILE AND INDUSTRIAL
APPLICATIONS

GENERAL USES FOR SUCTION LINES,
RETURN LINES, FILLING OIL TANKS, AND
OTHER LOW PRESSURE/HIGH FLOW OIL
APPLICATIONS

WORKS WITH ANY STANDARD AUTOMOTIVE OIL
FILTER WITH 3/4" NPT THREAD

READY FOR IMMEDIATE SHIPMENT

MADE IN

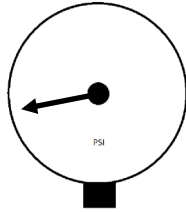
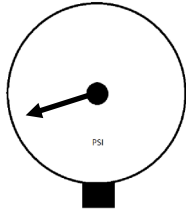


WWW.LUBRICATIONSCIENTIFICS.COM

FUNCTION ILLUSTRATION & SPECIFICATIONS

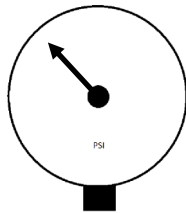
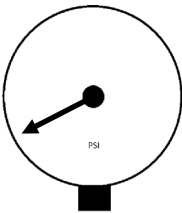
OUTLET

INLET



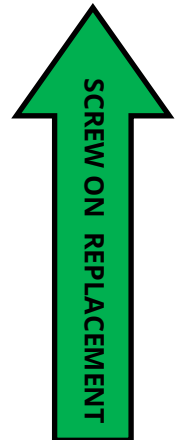
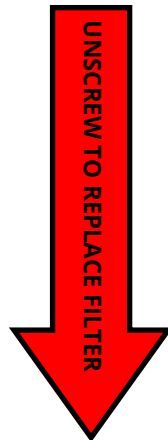
FILTER "OK"

Oil is decontaminated by passing lubricant through the filter element. Installation of pressure gages make indication of element replacement easy. **The filter is functioning properly when both gauges are at approximately the same psi level.**



FILTER REQUIRES REPLACEMENT

During filtration, particles are left behind in the filter element. Over time, the contaminated build up against the filter wall creates flow resistance. As the resistance increases, the outlet pressure will rise as it tries to push the lubricant through the clogged filter. **When the outlet pressure is noticeably higher (~40 psi) than the inlet pressure, it is time to replace the filter.**



ORDERING INFORMATION & PART NUMBERS

SPIN-ON OIL FILTER ASSEMBLY

ANODIZED ALUMINUM MANIFOLD

STAINLESS STEEL PRESSURE GAGES

MOUNTING BRACKET

HIGH FLOW FILTER

CANISTER FOR OIL USE ONLY

MAX PRESSURE: 150 PSI

STANDARD PACK: 1 EACH	
PART DESCRIPTION	PART NUMBER
SPIN-ON FILTER COMPLETE ASSEMBLY	LPFA-118-AL
REPLACEMENT ELEMENT	LPFA-118-RFE



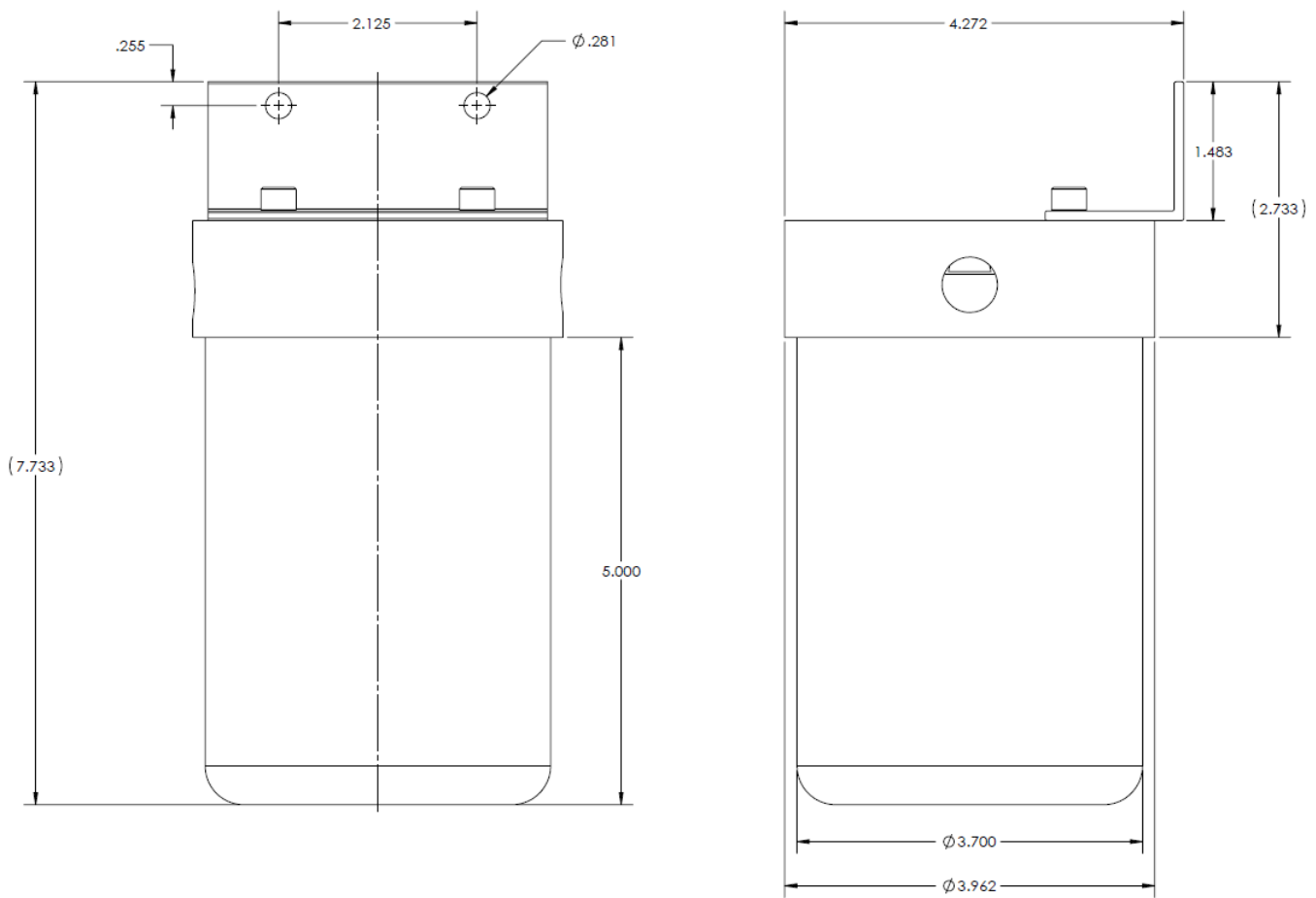
SPIN-ON FILTER COMPLETE ASSEMBLY



REPLACEMENT ELEMENT

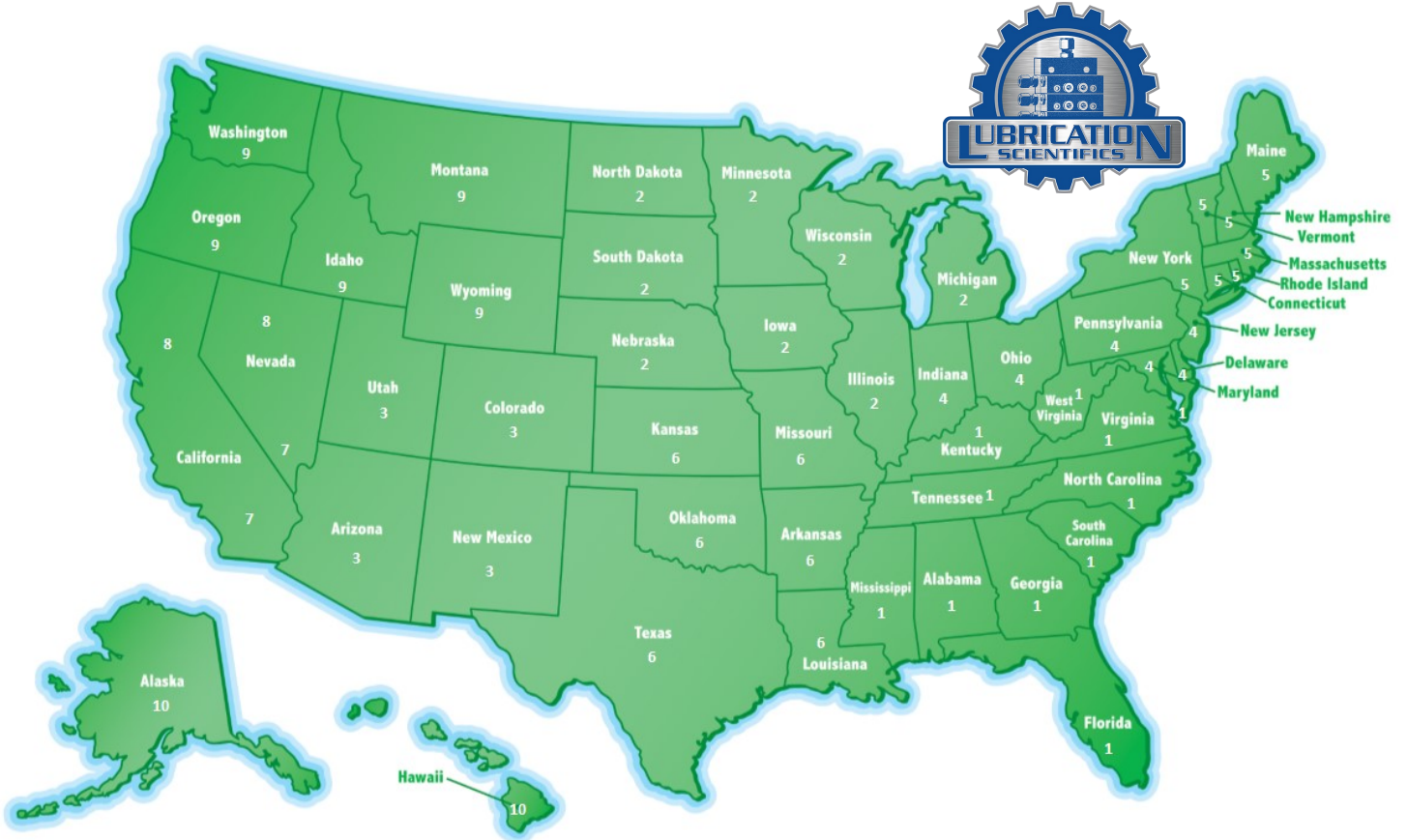
DIMENSIONS & MOUNTING INFORMATION

DIMENSIONS ARE IN INCHES



CONTACT US

IN THE USA, FIND YOUR STATE IN THE MAP BELOW, LOOK FOR THE REGION ID NUMBER AND FIND THAT NUMBER IN THE CONTACT INFORMATION CHART.



CONTACT INFORMATION CHART

1	Call Factory Direct - 877-452-0157	Outside of the United States	Call Factory Direct - 877-452-0157
2	David Donahue Cell: 414-507-9513 Email: d.donahue@lubricationscientifics.com		
3	Bernie Sauve + El Paso Texas Cell: 210-702-9930 Email: bernie@lubricationscientifics.com		
4	Andy Kromer Cell: 440-364-4721 Email: akclub@lubricationscientifics.com		
5	Call Factory Direct - 877-452-0157		
6	Cory Walker Cell: 832-585-7065 Email: c.walker@lubricationscientifics.com		
7	Richard Hanley - California - Santa Barbara, Ventura, Los Angeles, Orange, San Bernardino, Riverside, San Diego and Imperial Counties. Nevada - Clark County. Cell: 714-625-5539 Email: rth@lubricationscientifics.com		
8	California - All Counties not covered by Richard. Nevada - All Counties except Clark County. Call Factory Direct - 877-452-0157		
9	Call Factory Direct - 877-452-0157		
10	Call Factory Direct - 877-452-0157		

Customer Service (877-452-0157)

- ◆ Order status & order entry
- ◆ Pricing inquiries
- ◆ Part number look-ups
- ◆ Product availability information
- ◆ Shipment assistance
- ◆ All other general inquires

www.lubricationscientifics.com

- ◆ Product information, specifications, literature
- ◆ Locate sales reps and distributors
- ◆ Operator & Repair manuals
- ◆ Distributer Information
- ◆ Place orders and check current pricing
- ◆ Product Pricing



LUBRICATION SCIENTIFICS, LLC

17651 ARMSTRONG AVE.

IRVINE, CA 92614

UNITED STATES OF AMERICA

TOLL FREE TEL: (877) 452-0157, LOCAL TEL: (714) 557-0664, FAX: (714) 546-4564

WWW.LUBRICATIONSCIENTIFICS.COM