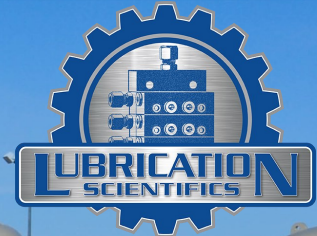
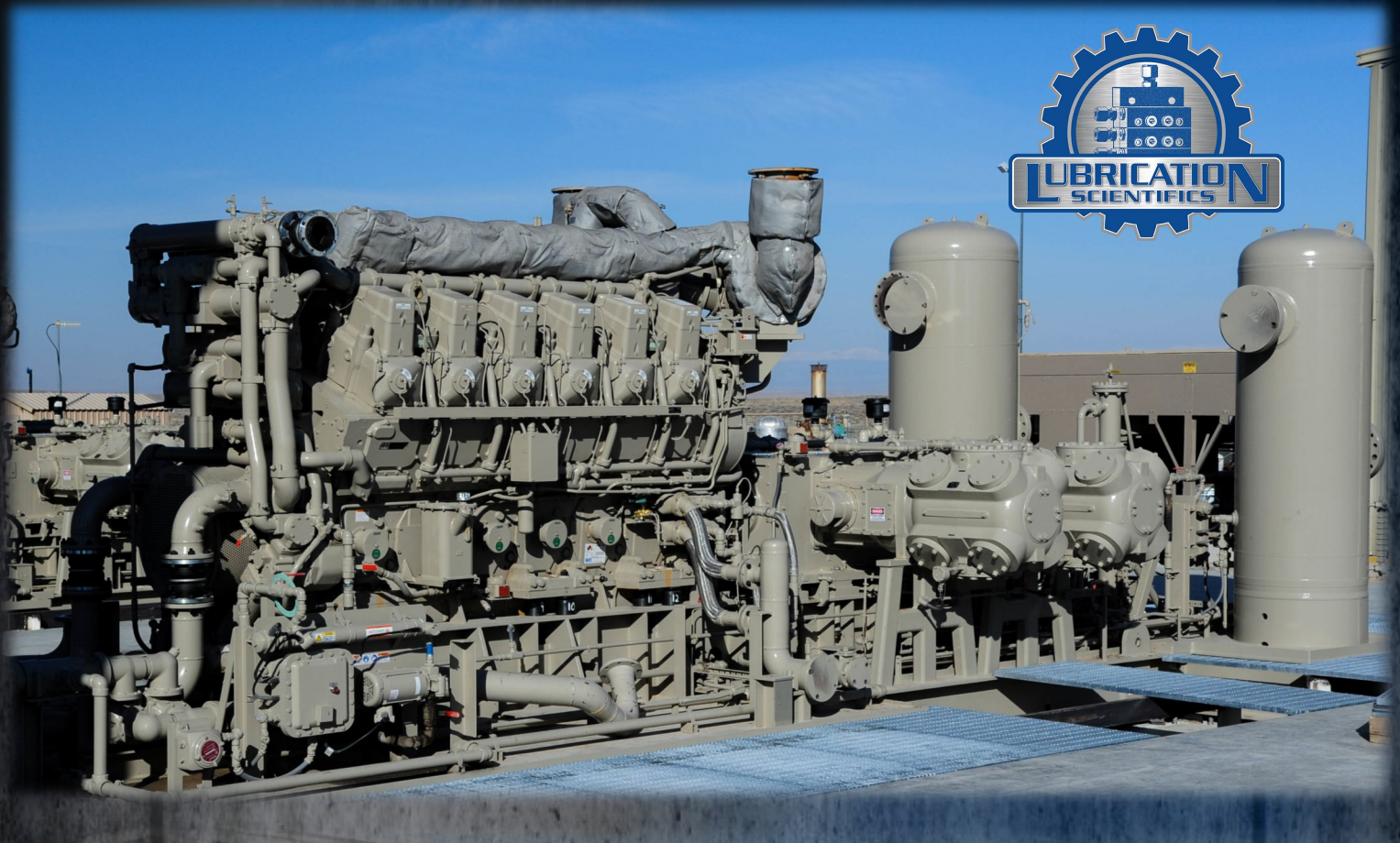


THE RIGHT PRODUCTS.

THE RIGHT VALUES.

THE RIGHT CHOICE.



PREMIUM GRADE PRODUCTS, COMPETITIVE PRICING, INDUSTRY SPECIFIC APPLICATIONS

GAS COMPRESSOR LUBRICATION PRODUCTS



INDUSTRIES SERVING

- ◆ NATURAL GAS PIPELINE STATIONS
- ◆ NATURAL GAS STORAGE FACILITIES
- ◆ REFINERIES & CHEMICAL PLANTS
- ◆ INLAND & OFF SHORE PLATFORMS

HIGH QUALITY PRODUCTS

- ◆ PRODUCTS AVAILABLE IN CARBON STEEL, 303, & 316 STAINLESS STEEL
- ◆ WE UTILIZE STATE OF THE ART CNC MANUFACTURING EQUIPMENT TO DELIVER DEPENDABLE, HIGH QUALITY PRODUCTS



SERIES PROGRESSIVE, SINGLE LINE PARALLEL, DUAL LINE AND HYBRID SYSTEM UPGRADES, AND DESIGN SERVICES AVAILABLE

For product bulletins & information visit us at

www.lubricationscientifics.com

Or call toll free at: (877) 452-0157

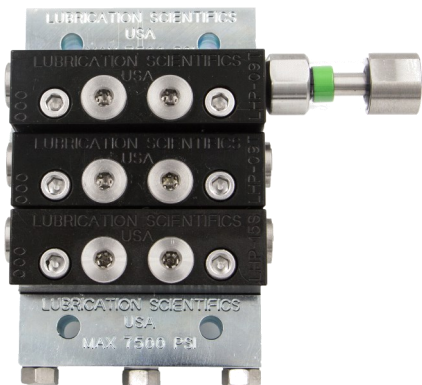


MADE IN



VALVES & FILTERS

LHP—HIGH PRESSURE DIVIDER VALVES



- HIGH PRESSURE SERIES PROGRESSIVE DIVIDER VALVE, ALSO AVAILABLE IN STANDARD PRESSURE
- DESIGNED WITH FEEDBACK MONITORING SYSTEM PERFORMANCE
- CARBON STEEL, 303, & 316 STAINLESS STEEL AVAILABLE
- WIDE RANGE OF SYSTEM ACCESSORIES FOR ANY REQUIREMENT
- INTERNAL CHECK VALVES COME STANDARD WITH 316 STAINLESS STEEL HARDWARE
- IDEAL FOR INDUSTRIAL, MARINE, & FOOD PROCESSING MACHINERY
- COMPLETE BASEPLATE ASSEMBLIES AVAILABLE
- 1-20 LUBE POINTS PER VALVE ASSEMBLY
- **VISUAL CYCLE INDICATORS (SHOWN) AND SWITCHES AVAILABLE, SEE BULLETIN LSM026**
- **REFER TO BULLETIN FOR LHP DIVIDER VALVES: LSM014**

DIRT TRAP & PRIMER FILTER

- CONTAMINATION TRAPPED IN THROW AWAY ELEMENT FOR CLEAN FILTER REPLACEMENT
- SUITABLE FOR OIL AND GREASE APPLICATIONS
- 5 TO 420 MICRON FILTRATION ELEMENTS AVAILABLE
- ACCOMMODATES HIGH PRESSURES UP TO 7500 PSI (STEEL), 6000 PSI (ALUMINUM)
- MULTIPLE INLETS AND OUTLETS FOR MONITORING PRESSURE OR INSTALLING BLEED PORTS
- MOUNTS IN ANY ORIENTATION
- **FILTER PRIMER** REMOVES & VENTS TRAPPED AIR FROM ENTERING THE LUBE LINE
- **REFER TO BULLETIN: LSM002**



SPIN-ON FILTER



- GRANTS ACCESS TO AN INEXPENSIVE, EASY MAINTENANCE, LOW PRESSURE, FILTRATION UNIT
- DESIGNED FOR HIGH FLOW FILTRATION
- COMPATIBLE WITH PETROLEUM BASED MOBILE AND INDUSTRIAL APPLICATIONS
- SOME USES INCLUDE; SUCTION LINES, RETURN LINES, FILLING OIL TANKS
- 3/4" NPT FILTER THREAD
- **REFER TO BULLETIN: LSM026**

PUMPS, COMPRESSOR MONITORS, & PROXIMITY SWITCHES

SINGLE & DUAL ZONE EXPLOSION PROOF COMPRESSOR MONITORS

- SINGLE & DUAL ZONE MONITORS
- EXPLOSION PROOF ENCLOSURES
- LONG BATTERY LIFE
- PROGRAMMABLE ALARM & SHUTDOWN PROTECTION
- OPEN AND CLOSED FAILSAFE MODES
- DIGITAL DISPLAY
- AVAILABLE IN 120V AC, 24V DC OR AA BATTERY POWERED
- BATTERY POWERED HAS A LIFE EXPECTANCY OF 5-10 YEARS & COMES WITH A LOW BATTERY ALARM INDICATOR
- MONITOR CONTINUOUSLY ANALYZES DIVIDER VALVES & PERFORMS A SHUTDOWN IF A PROBLEM EXISTS
- **REFER TO BULLETIN: LSM004**



L55 PRESSURE FED PUMPS



- PRESSURE FED BOX PUMP
- 1/4" & 3/8" PLUNGER SIZES AVAILABLE
- FITS MOST LUBRICATOR BOX MANUFACTURES SUCH AS ARIEL, CPI, LINCOLN INDUSTRIAL, & LUBRIQUIP/MANZEL
- FOR PETROLEUM & SYNTHETIC BASED OIL APPLICATIONS
- CARBON STEEL CONSTRUCTION
- **BULLETIN COMING SOON**

PROXIMITY SWITCHES & VISUAL CYCLE INDICATORS

- DESIGNED FOR HIGH PRESSURE HYDRAULIC & STANDARD LUBRICATION APPLICATIONS
- ACCOMMODATES PRESSURE RATING UP TO 7500 PSI
- RATED FOR HAZARDOUS DUTY, CLASS 1, DIV. 1, GROUPS A, B, C, D, CLASS II GROUPS E,F,G, CLASS III
- ALL SWITCHES ARE FIELD SENSITIVE, DRY CONTACT, WITH CERAMIC MAGNETS .
- 200 CYCLES PER MINUTE WITH A MAXIMUM CYCLE LIFE OF 150,000,000 CYCLES
- ELECTRICAL RATINGS AT 120VAC, 240VAC, 25VDC, AND 125VDC
- **VISUAL CYCLE INDICATOR** PROVIDES VISUAL VERIFICATION OF VALVE CYCLES DURING LUBE EVENTS
- **REFER TO BULLETIN: LSM026**



CHECK VALVES & ACCESSORIES

RUPTURE TO ATMOSPHERE BLOW-OUT ASSEMBLIES & MANUAL RESET INDICATORS

- DESIGNED FOR STANDARD & HIGH PRESSURE LUBRICATION APPLICATIONS
- CAN BE EASILY INTEGRATED INTO EXISTING SYSTEMS
- ENABLES FAST TROUBLESHOOTING OF SYSTEM BLOCKAGES OR HIGH PRESSURE SPIKES
- AVAILABLE IN 303 & 316 STAINLESS STEEL
- INSTALLS IN ALTERNATE OUTLET PORTS
- OFFERS THE FLEXIBILITY TO EITHER SHUT DOWN A SYSTEM OR CONTINUE OPERATION DURING A BLOCKAGE OR HIGH PRESSURE SITUATION
- **REFER TO BULLETIN:** LSM002

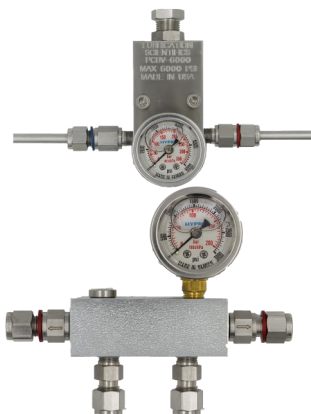


CHECK VALVES

- CHECK VALVES CONSTRAIN LUBRICATION FLOW TO ONE DIRECTION
- INLET & OUTLET CHECK VALVES ARE INTEGRATED INTO THE SYSTEM TO ENSURE PROPER LUBRICATION SYSTEM FUNCTION
- PREVENTS BACK PRESSURE & ENSURES FULL LUBE LINES
- CONNECTION ADAPTERS MAKE THIS PRODUCT LINE VERSATILE & REDUCES INVENTORY COSTS
- ALL CHECK VALVES ARE COIN SEATED FOR SUPERIOR SEALING
- OUTLET CHECKS ARE AVAILABLE IN CONVENTIONAL DESIGN OR INTEGRAL SINGLE BALL
- INLET CHECKS ARE SINGLE OR DOUBLE BALL, CONVENTIONAL OR INTEGRAL DESIGN
- AVAILABLE IN 303 & 316 STAINLESS STEEL
- **REFER TO BULLETIN:** LSM011



BALANCING VALVES & DISCHARGE MANIFOLD ASSEMBLIES



- 303 STAINLESS STEEL CONSTRUCTION
- FIELD ADJUSTABLE FROM 1500—6000 PSI
- MOUNTED IN ANY DIRECTION
- NOT AFFECTED BY DOWNSTREAM PRESSURES
- COMPACT FOOTPRINT
- DISCHARGE MANIFOLDS ARE AVAILABLE IN 2 PUMP DISCHARGE & LEFT OR RIGHT 1 PUMP MANIFOLD
- **FOR BALANCING VALVE SEE** LSM006 FOR MORE INFO
- **FOR DISCHARGE VALVES, SEE** LSM008 FOR MORE INFO