

**HIGH PRESSURE/ HIGH FLOW CARTRIDGE FILTER FOR CIRCULATING OIL SYSTEMS**

**PRODUCT DESCRIPTION**

OIL FILTER CARTRIDGES DECONTAMINATE LUBRICANT AT 10, 20, AND 50 MICRONS

LIGHTWEIGHT 2024 AIRCRAFT ALUMINUM CONSTRUCTION

EASY MAINTENANCE AND CARTRIDGE REPLACEMENT

CAN ACCOMMODATE PRESSURES UP TO 3000 PSI

EASY TO DETERMINE WHEN CARTRIDGES ARE FULL USING PRESSURE GAUGES

STANDARD AND LONG CARTRIDGES AVAILABLE

HIGH PRESSURE AND LOW PRESSURE CARTRIDGES AVAILABLE

**BENEFITS & FEATURES**

1 PIECE MACHINED CANISTER—NO TIE RODS

ZERO LEAK, HIGH PRESSURE CARTRIDGE FILTER

LIGHTWEIGHT ANODIZED ALUMINUM CONSTRUCTION

10, 20, & 50 MICRON FILTER CARTRIDGES AVAILABLE

FILTER ELEMENT SELF-CENTERS IN CANISTER

OPTIONAL LONG FILTER OPTION FOR LONGER FILTER LIFE AND LARGER CAPACITY

FOR OIL APPLICATIONS

EASY TO REPLACE CARTRIDGES

EASY TO INSTALL INLINE

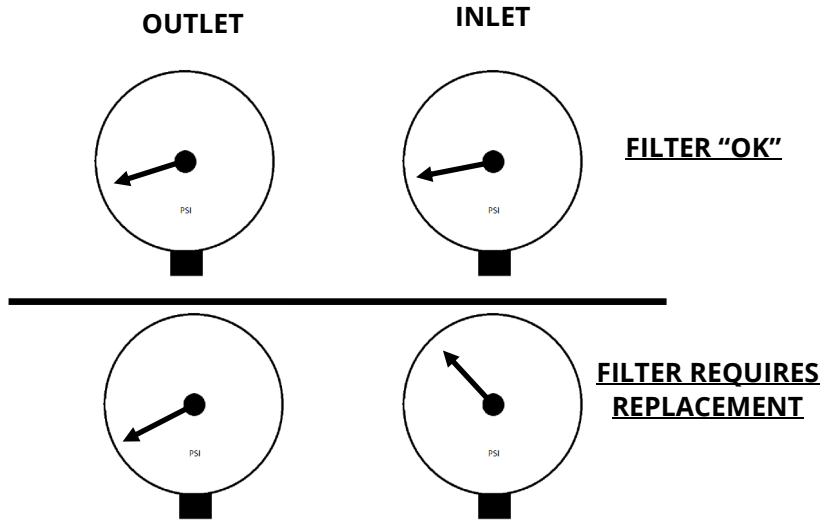
**READY FOR IMMEDIATE SHIPMENT**

MADE IN



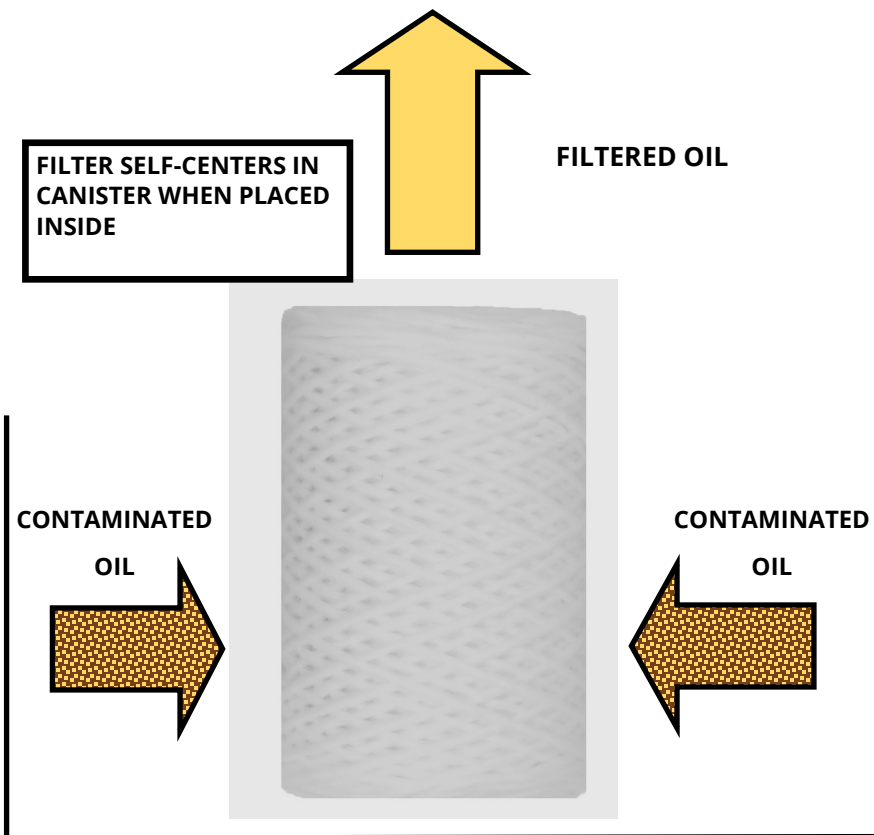
[WWW.LUBRICATIONSCIENTIFICS.COM](http://WWW.LUBRICATIONSCIENTIFICS.COM)

**FUNCTION ILLUSTRATION & SPECIFICATIONS**



Oil is decontaminated by passing lubricant through the filter element as shown below. Installation of pressure gauges make indication of element replacement easy. **The filter is functioning properly when both gauges are at approximately the same psi level.**

During filtration, particles are left behind in the filter element. Over time, the contaminated build up against the filter wall creates flow resistance. As the resistance increases, the outlet pressure will rise as it tries to push the lubricant through the clogged filter. **When the outlet pressure is noticeably higher (~40 psi) than the inlet pressure, it is time to replace the filter.**



**SPECIFICATIONS**

2024 AIRCRAFT GRADE ALUMINUM  
 FILTER RATING: OIL @ 10,20,50 MICRONS  
 PRESSURE RATING: 3500/5000 PSI  
 WEIGHT: 2 LBS

**ORDERING INFORMATION & PART NUMBERS**

**COMPLETE FILTER ASSEMBLY (NO GAUGE)**

STANDARD PACK: 1 EACH	
PRODUCT DESCRIPTION	PART NUMBER
FILTER ASSEMBLY, 3 MICRONS (SHORT)	CFIL-03-US
FILTER ASSEMBLY, 5 MICRONS (SHORT)	CFIL-05-US
FILTER ASSEMBLY, 10 MICRONS (SHORT)	CFIL-10-US
FILTER ASSEMBLY, 20 MICRONS (SHORT)	CFIL-20-US
FILTER ASSEMBLY, 50 MICRONS (SHORT)	CFIL-50-US

**REPLACEMENT FILTER ELEMENTS & GAUGE**

STANDARD PACK: 1 EACH	
PRODUCT DESCRIPTION	PART NUMBER
FILTER ELEMENT, 3 MICRONS (SHORT)	CFIL-03-ES
FILTER ELEMENT, 5 MICRONS (SHORT)	CFIL-05-ES
FILTER ELEMENT, 10 MICRONS (SHORT)	CFIL-10-ES
FILTER ELEMENT, 20 MICRONS (SHORT)	CFIL-20-ES
FILTER ELEMENT, 50 MICRONS (SHORT)	CFIL-50-ES

**NOTE: PRESSURE GAUGES SOLD SEPARATELY**

STANDARD PACK: 1 EACH	
PRODUCT DESCRIPTION	PART NUMBER
FILTER ASSEMBLY, 3 MICRONS (LONG)	CFIL-03-UL
FILTER ASSEMBLY, 5 MICRONS (LONG)	CFIL-05-UL
FILTER ASSEMBLY, 10 MICRONS (LONG)	CFIL-10-UL
FILTER ASSEMBLY, 20 MICRONS (LONG)	CFIL-20-UL
FILTER ASSEMBLY, 50 MICRONS (LONG)	CFIL-50-UL

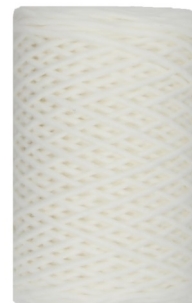
STANDARD PACK: 1 EACH	
PRODUCT DESCRIPTION	PART NUMBER
FILTER ELEMENT, 3 MICRONS (LONG)	CFIL-03-EL
FILTER ELEMENT, 5 MICRONS (LONG)	CFIL-05-EL
FILTER ELEMENT, 10 MICRONS (LONG)	CFIL-10-EL
FILTER ELEMENT, 20 MICRONS (LONG)	CFIL-20-EL
FILTER ELEMENT, 50 MICRONS (LONG)	CFIL-50-EL

**NOTE: PRESSURE GAUGES SOLD SEPARATELY**

STANDARD PACK: 1 EACH	
GAUGE DESCRIPTION	PART NUMBER
LOWER MOUNT, 1/4 NPTF, 5000 PSI	LM-25-5K-4

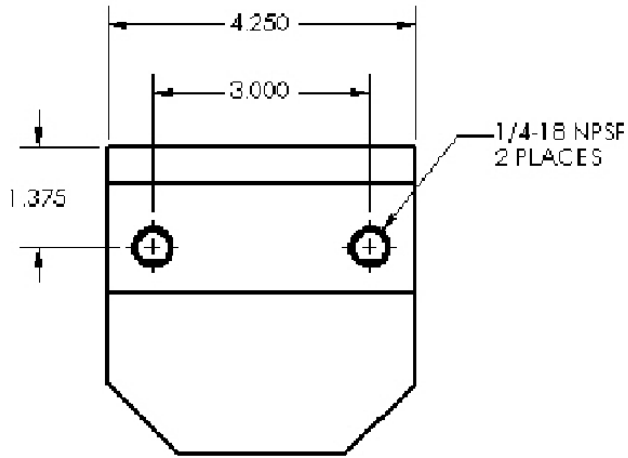


STANDARD PACK: 1 EACH	
PRODUCT DESCRIPTION	PART NUMBER
4.5" FILTER, WITHOUT ELEMENT	CFIL-U-US
10.5" FILTER WITHOUT ELEMENT	CFIL-U-UL

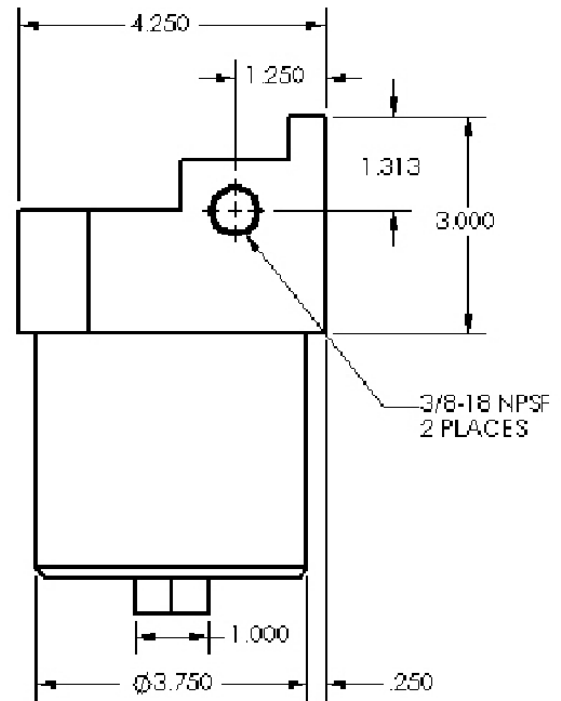
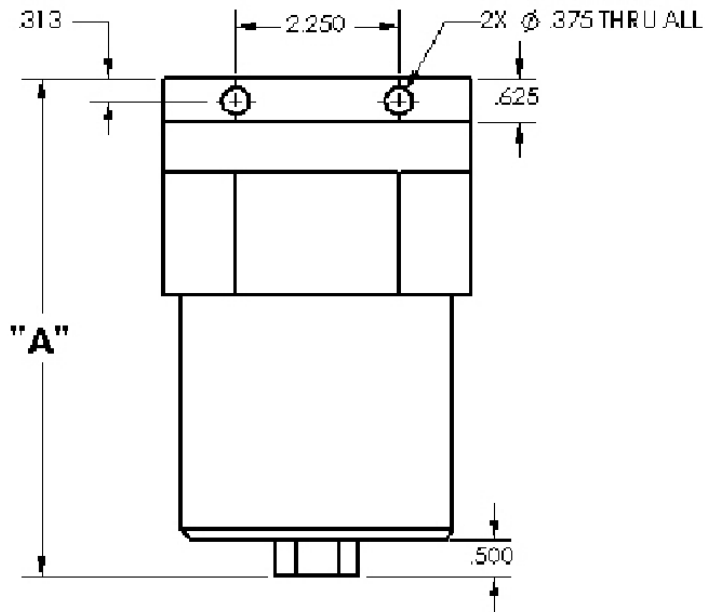


## ORDERING INFORMATION

DIMENSIONS ARE IN INCHES



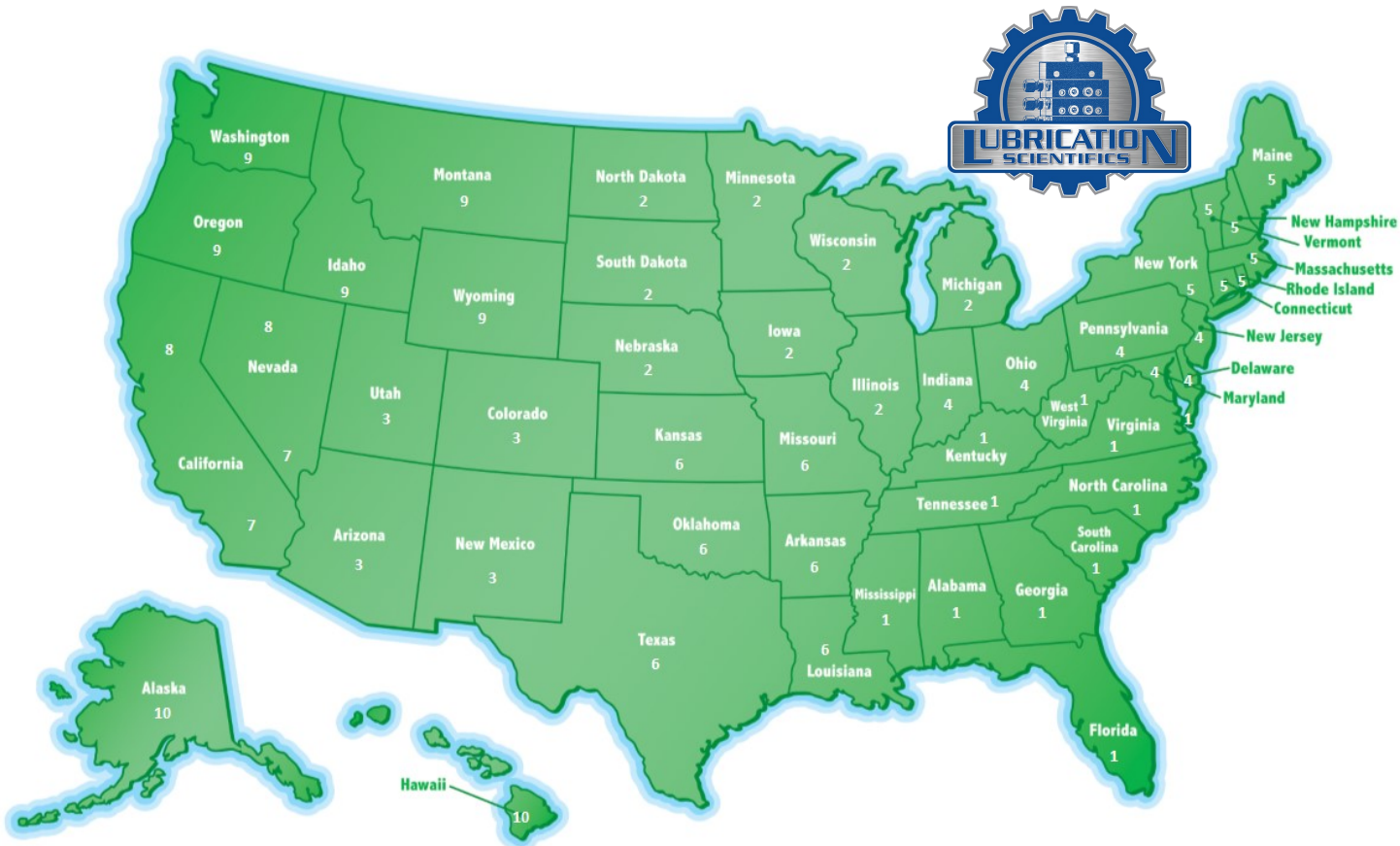
PART NUMBER	"A" DIM
CFIL-10-US	6.875" (SHORT)
CFIL-20-US	
CFIL-50-US	
CFIL-10-UL	12.875 (LONG)
CFIL-20-UL	
CFIL-50-UL	





CONTACT US

IN THE USA, FIND YOUR STATE IN THE MAP BELOW, LOOK FOR THE REGION ID NUMBER AND FIND THAT NUMBER IN THE CONTACT INFORMATION CHART.



CONTACT INFORMATION CHART

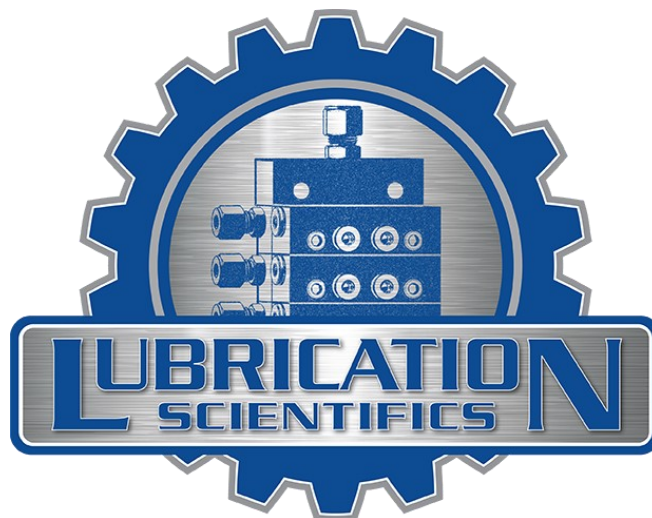
1	Call Factory Direct - 877-452-0157		
2	David Donahue Cell: 414-507-9513 Email: d.donahue@lubricationscientifics.com	Outside of the United States	Call Factory Direct - 877-452-0157
3	Bernie Sauve + El Paso Texas Cell: 210-702-9930 Email: bernie@lubricationscientifics.com	7	Richard Hanley - <b>California</b> - Santa Barbara, Ventura, Los Angeles, Orange, San Bernardino, Riverside, San Diego and Imperial Counties. <b>Nevada</b> - Clark County. Cell: 714-625-5539 Email: rth@lubricationscientifics.com
4	Andy Kromer Cell: 440-364-4721 Email: akclub@lubricationscientifics.com	8	<b>California</b> - All Counties not covered by Richard. <b>Nevada</b> - All Counties except Clark County. Call Factory Direct - 877-452-0157
5	Call Factory Direct - 877-452-0157	9	Call Factory Direct - 877-452-0157
6	Cory Walker Cell: 832-585-7065 Email: c.walker@lubricationscientifics.com	10	Call Factory Direct - 877-452-0157

**Customer Service (877-452-0157)**

- ◆ Order status & order entry
- ◆ Pricing inquiries
- ◆ Part number look-ups
- ◆ Product availability information
- ◆ Shipment assistance
- ◆ All other general inquires

**www.lubricationscientifics.com**

- ◆ Product information, specifications, literature
- ◆ Locate sales reps and distributors
- ◆ Operator & Repair manuals
- ◆ Distributer Information
- ◆ Place orders and check current pricing
- ◆ Product Pricing



LUBRICATION SCIENTIFICS, LLC

17651 ARMSTRONG AVE.

IRVINE, CA 92614

UNITED STATES OF AMERICA

TOLL FREE TEL: (877) 452-0157, LOCAL TEL: (714) 557-0664, FAX: (714) 546-4564

**WWW.LUBRICATIONSCIENTIFICS.COM**