

LIQUID FILLED PRESSURE GAUGES

PRODUCT DESCRIPTION

STAINLESS STEEL CONSTRUCTION

ACRYLIC LENS

1/4 & 1/8 NPT GAUGES AVAILABLE

ALL GAUGES ARE 3-2-3 % ACCURACY

DIALS ARE STANDARD PSI/BAR WITH LEGEND 100 X
kPa

GAUGE SIZES AVAILABLE IN 1.5", 2.0", & 2.5"
DIAMETER

MAX PRESSURE RATINGS AVAILABLE FROM 300—6000
PSI

BENEFITS & FEATURES

ABLE TO ACCURATELY MEASURE PRESSURE
IN A LUBRICATION SYSTEM

USES INCLUDE PRESSURE MONITORING,
DETERMINING CLOGGED FILTERS, &
VISUALIZING PRESSURE DIFFERENTIALS

2-3 % PRESSURE ACCURACY

GAUGES AVAILABLE IN CENTER BACK
MOUNT OR LOWER BACK MOUNT

IMPACT/SCRATCH RESISTANT GAUGE LENS

READY FOR IMMEDIATE SHIPMENT

MADE IN



WWW.LUBRICATIONSCIENTIFICS.COM

FUNCTION ILLUSTRATION & SPECIFICATIONS

GAUGE LEGEND
COMMON PRESSURE SCALES

PSI	POUND PER SQUARE INCH
IN. .HG.	INCHES OF MERCURY
IN. H2O	INCHES OF WATER COLUMN
kPa	KILOPASCAL
mBar	MILIBAR
Oz/sq. IN	INCHES PER SQUARE INCH

ACCURACY LEGEND
ASME CLASS

GRADE A	+/- 2-1-2% OF SPAN
GRADE B	+/- 3-2-3% OF SPAN
GRADE 1A	+/- 1% OF SPAN
GRADE 2A	+/- 0.05% OF SPAN
GRADE 3A	+/- 0.25% OF SPAN

DEFINING THE +/- 3-2-3% OF SPAN ACCURACY

- THE 3-2-3% ACCURACY IS RELATIVE TO WHERE THE NEEDLE IS POSITIONED ON THE SPAN OF THE GAUGE.
- THE FIRST "TWO" IN THE 2-3-2% REFERS TO THE ACCURACY IN THE FIRST 1/4 SECTION OF THE GAUGE. THE FIRST 1/4 SECTION IS ACCURATE +/- 3%. THE NEXT 1/2 OF THE GAUGE IS +/- 2% ACCURATE. AND FINALLY, THE LAST 1/4 IS BACK TO 3% ACCURACY

THIS IS HOW THE +/- 3-2-3% ACCURACY EXPRESSION IS INTERPRETED.

DEFINING BACK CENTER MOUNT AND BOTTOM MOUNT



BOTTOM MOUNT



BACK CENTER MOUNT

BOTTOM MOUNT—ARE THE MORE COMMON MOUNTING STYLE FOR PRESSURE GAUGES. THE PIPE THREAD STEMS OUT FROM THE BOTTOM OF THE GAUGE.

BACK MOUNT— THE PIPE THREAD STEMS FROM THE REAR OF THE GAUGE

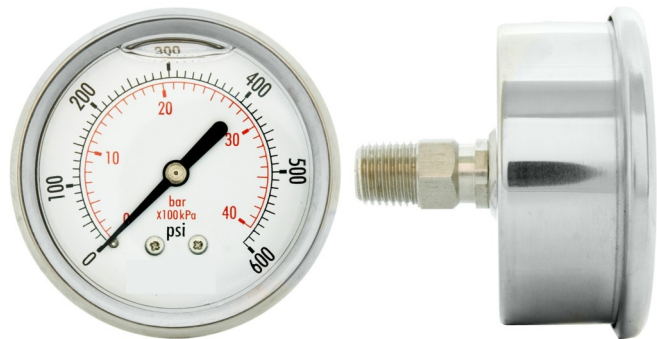
PRESSURE GAUGE PART NUMBER ORDERING INFORMATION

ALL PRESSURE GAUGES ARE STAINLESS STEEL CONSTRUCTION, LIQUID FILLED

STANDARD PACK: 1 EACH			
MOUNT LOCATION	PSI	FITTING	PART NUMBER
LOWER MOUNT	300	1/4" NPT	LLM-20-3C-4
LOWER MOUNT	1000	1/4" NPT	LLM-25-1K-4
LOWER MOUNT	3000	1/4" NPT	LLM-25-3K-4
LOWER MOUNT	5000	1/4" NPT	LM-25-5K-4
LOWER MOUNT	6000	1/4" NPT	LLM-25-6K-4
LOWER MOUNT	10000	1/4" NPT	LLM-25-10K-4
CENTER BACK MOUNT	6000	1/8" NPT	LCB-15-6K-2



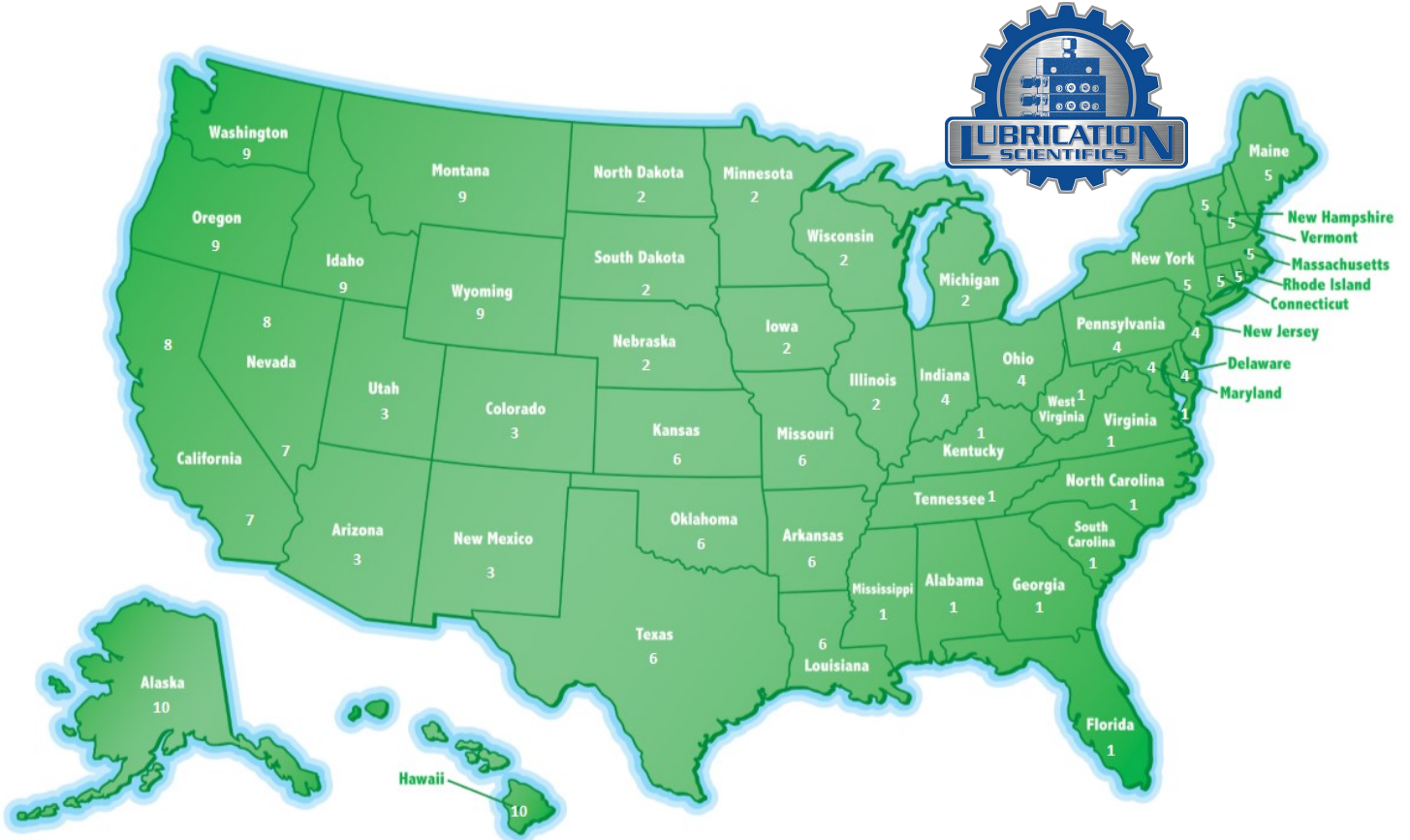
LOWER MOUNT



CENTER BACK MOUNT

CONTACT US

IN THE USA, FIND YOUR STATE IN THE MAP BELOW, LOOK FOR THE REGION ID NUMBER AND FIND THAT NUMBER IN THE CONTACT INFORMATION CHART.



CONTACT INFORMATION CHART

1	Call Factory Direct - 877-452-0157	Outside of the United States	Call Factory Direct - 877-452-0157
2	David Donahue Cell: 414-507-9513 Email: d.donahue@lubricationscientifics.com		
3	Bernie Sauve + El Paso Texas Cell: 210-702-9930 Email: bernie@lubricationscientifics.com	7	Richard Hanley - California - Santa Barbara, Ventura, Los Angeles, Orange, San Bernardino, Riverside, San Diego and Imperial Counties. Nevada - Clark County. Cell: 714-625-5539 Email: rth@lubricationscientifics.com
4	Andy Kromer Cell: 440-364-4721 Email: akclub@lubricationscientifics.com	8	California - All Counties not covered by Richard. Nevada - All Counties except Clark County. Call Factory Direct - 877-452-0157
5	Call Factory Direct - 877-452-0157	9	Call Factory Direct - 877-452-0157
6	Cory Walker Cell: 832-585-7065 Email: c.walker@lubricationscientifics.com	10	Call Factory Direct - 877-452-0157

Customer Service (877-452-0157)

- ◆ Order status & order entry
- ◆ Pricing inquiries
- ◆ Part number look-ups
- ◆ Product availability information
- ◆ Shipment assistance
- ◆ All other general inquires

www.lubricationscientifics.com

- ◆ Product information, specifications, literature
- ◆ Locate sales reps and distributors
- ◆ Operator & Repair manuals
- ◆ Distributer Information
- ◆ Place orders and check current pricing
- ◆ Product Pricing



LUBRICATION SCIENTIFICS, LLC

17651 ARMSTRONG AVE.

IRVINE, CA 92614

UNITED STATES OF AMERICA

TOLL FREE TEL: (877) 452-0157, LOCAL TEL: (714) 557-0664, FAX: (714) 546-4564

WWW.LUBRICATIONSCIENTIFICS.COM