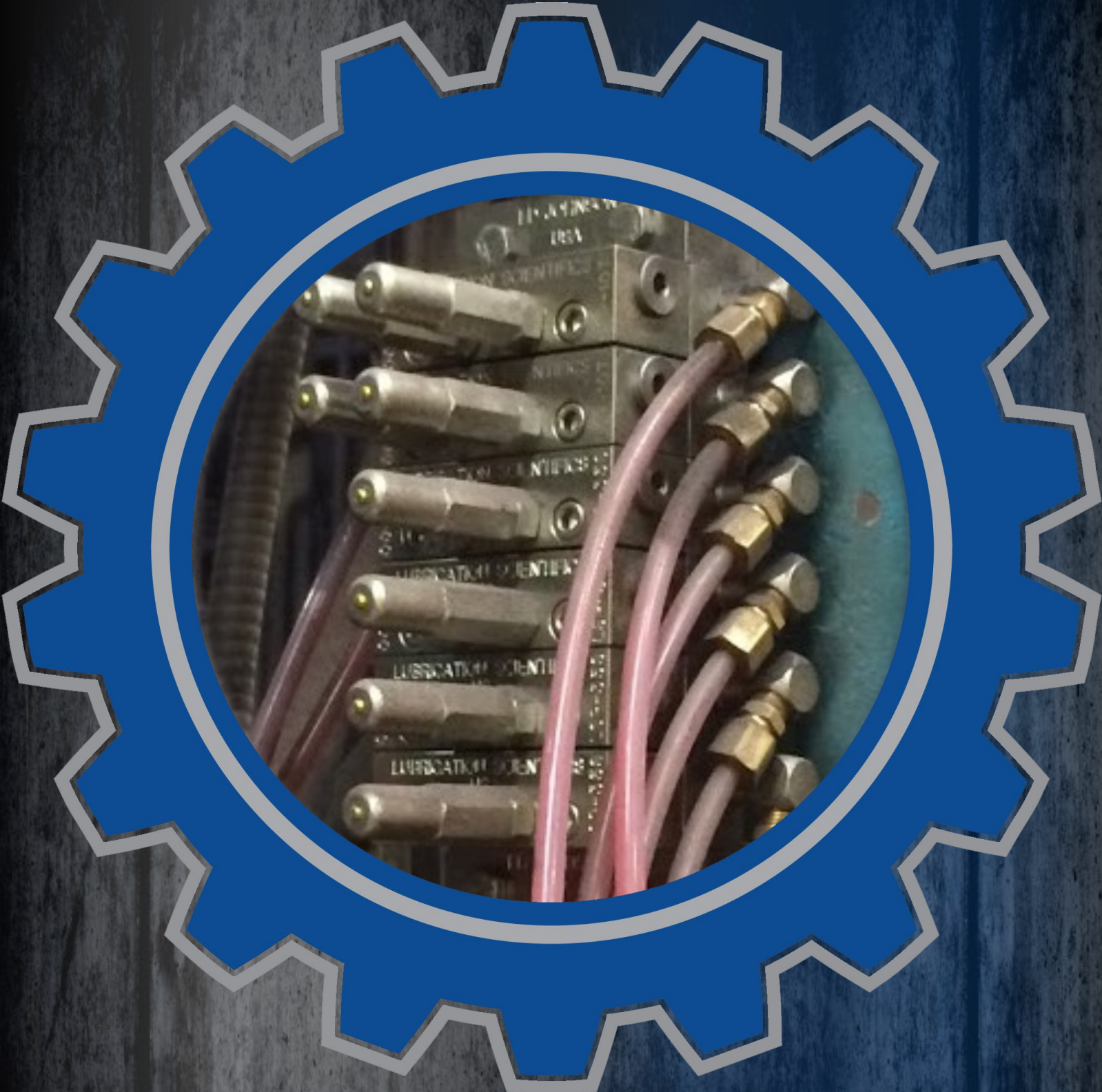


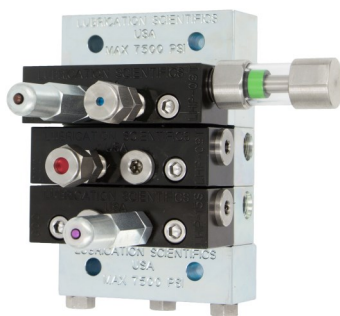
# LUBRICATION SCIENTIFICS, LLC

THE RIGHT PRODUCTS. THE RIGHT VALUES. THE RIGHT CHOICE.



**PERFORMANCE INDICATOR PRODUCTS**

**RESET INDICATORS—BLOWOUT FITTINGS—ATMOSPHERIC RESETS**



**AUTOMATIC RELIEF RESET INDICATOR, MANUAL RESET INDICATOR, BLOWOUT FITTINGS & DISKS**

## PRODUCT DESCRIPTION

DESIGNED FOR HIGH PRESSURE HYDRAULIC AND LUBRICATION APPLICATIONS

INSTALL IN ALTERNATE OUTLET PORTS OF SERIES PROGRESSIVE DIVIDER VALVES

BLOWOUT FITTINGS & ATMOSPHERIC RESETS ALLOW FOR VALVE FUNCTION DURING LUBE LINE BLOCKAGE

ACCURATELY DETECT LOCATIONS OF VALVE FAILURES, HIGH PRESSURE CONDITIONS, AND LUBE LINE BLOCKAGES

MANUAL RESET INDICATOR WITH MEMORY ELIMINATES THE GUESS WORK OF LOCATING A HIGH PRESSURE VALVE OR LUBE LINE AREA

## BENEFITS & FEATURES

CAN EASILY BE INTEGRATED INTO EXISTING SYSTEMS

THE OPTION OF AUTOMATIC OR MANUAL RESETTING INDICATORS

ENABLES FAST TROUBLESHOOTING OF SYSTEM BLOCKAGES OR HIGH PRESSURE SPIKES

OFFERS THE FLEXIBILITY TO EITHER SHUT DOWN A LUBE SYSTEM OR CONTINUE OPERATION DURING A VALVE BLOCKAGE OR HIGH PRESSURE CONDITION

303 AND 316 STAINLESS STEEL AVAILABLE FOR ALL INDICATORS—CARBON STEEL ALSO AVAILABLE FOR MANUAL RESET INDICATORS

## READY FOR IMMEDIATE SHIPMENT

MADE IN



[WWW.LUBRICATIONSCIENTIFICS.COM](http://WWW.LUBRICATIONSCIENTIFICS.COM)

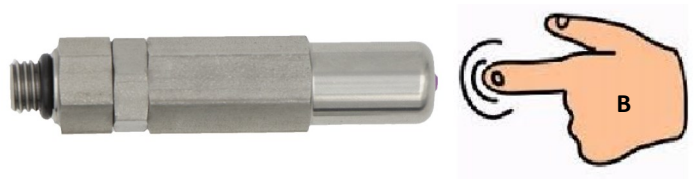
## FUNCTION ILLUSTRATION

### Manual Reset Memory Indicator Function

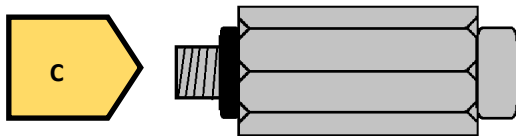
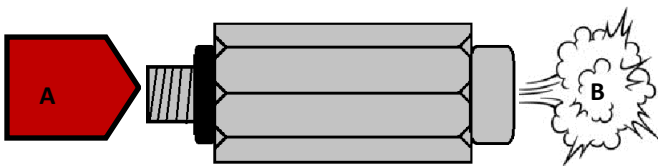
**Illustration A:** Excess pressure builds in lube point outlet due to a blockage and begins to overcome an engineered pressure indicator spring pushing the indicator pin outward.

**Illustration B:** The indicator pin remains engaged until manually reset showing pressure, at some point, had built up. Pin is manually reset once the location of the high pressure is noted.

#### MANUAL RESET INDICATOR



#### ATMOSPHERIC RESET



### Atmospheric Reset Illustration

**Illustration A:** A blockage in the lube line creates a high pressure situation in a valve.

**Illustration B:** In order to supply lubricant to the non blocked lube points, pressure must be relieved from the blocked line. The excess pressure, created by the blockage, overcomes an engineered pressure indicator spring pushing the valve open allowing the pressure to vent. In turn, the lube system is able to function.

**Illustration C:** Once the pressure is reduced, the indicator spring will close the vent allowing for normal valve operation. If the line is still blocked, the process will repeat.

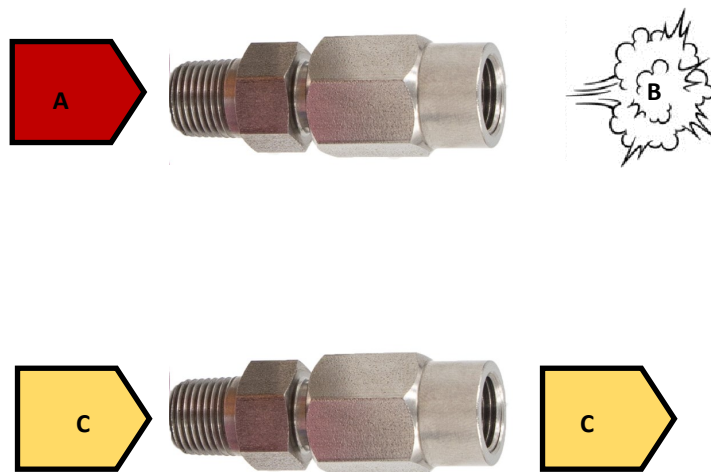
## FUNCTION ILLUSTRATION

## Blowout Indicator Illustration

**Illustration A:** A blockage in the lube line creates excess pressure in the valve.

**Illustration B:** The high pressure from the lube line blockage causes the disk to rupture. The rupture allows the pressure to be relieved from that location.

**Illustration C:** Once the disk is ruptured, the lube will spill out from the rupture point indicating a location of a high pressure. Once the blockage is noted and cleared, the disk will need to be replaced before normal lube operation may resume.



## ORDERING INFORMATION & PART NUMBERS

### PERFORMANCE RESET INDICATORS W/ MEMORY

STANDARD PACK: 5 EACH		1/8 NPSF O-RING CONNECTION	
ITEM DESCRIPTION	CARBON STEEL	303 STAINLESS	316 STAINLESS
1,000 PSI	N/A	303-P1000	316-P1000
1,500 PSI	N/A	303-P1500	316-P1500
2,000 PSI	N/A	303-P2000	316-P2000
2,500 PSI	N/A	303-P2500	316-P2500
3,000 PSI	N/A	303-P3000	316-P3000
3,500 PSI	N/A	303-P3500	316-P3500
4,000 PSI	N/A	303-P4000	316-P4000
5,000 PSI	N/A	303-P5000	316-P5000



NOTE: Performance indicators are compatible with Trabon Style Divider Valves only

**FOR LINCOLN STYLE VALVES USE ADAPTER WITH THE PERFORMANCE RESET INDICATORS ABOVE.**

DESCRIPTION	303 STAINLESS STEEL	316 STAINLESS STEEL
LINCOLN STYLE INDICATOR ADAPTER	303-PI-ADP-L	316-PI-ADP-L



TRABON IS A REGISTERED TRADEMARK OF GRACO, INC.

LINCOLN IS A REGISTERED TRADEMARK OF LINCOLN INDUSTRIAL

**ORDERING INFORMATION & PART NUMBERS**

**BLOWOUT FITTINGS**



↑  
**LOW PRESSURE PLAIN NUT**

↑  
**HIGH PRESSURE PLAIN NUT**

<b>STANDARD PACK: 5 EACH</b>	<b>1/8" O-RING SEAL OR 1/8" NPTF</b>	
<b>ITEM DESCRIPTION</b>	<b>303 STAINLESS</b>	<b>316 STAINLESS</b>
LOW PRESSURE 1/8" NPSF PLAIN NUT W/ 1/4" APERTURE	BOF-LP-303-NPTF BOF-LP-303-ORS	BOF-LP-316-NPTF BOF-LP-316-ORS
LOW PRESSURE 1/8" NPSF SPUD NUT W/ 1/4" APERTURE	BOF-LP-303R-NPTF BOF-LP-303R-ORS	BOF-LP-316R-NPTF BOF-LP-316R-ORS
HIGH PRESSURE 1/8" NPSF PLAIN NUT W/ 1/8" APERTURE	BOF-HP-303-NPTF BOF-HP-303-ORS	BOF-HP-316-NPTF BOF-HP-316-ORS
HIGH PRESSURE 1/8" NPSF SPUD NUT W/ 1/8" APERTURE	BOF-HP-303R-NPTF BOF-HP-303R-ORS	BOF-HP-316R-NPTF BOF-HP-316R-ORS

**NOTE: RUPTURE DISK NOT INCLUDED—SEE PAGE 7**

**BLOWOUT FITTINGS FOR LINCOLN MC2 DIVIDER VALVES**

<b>STANDARD PACK: 5 EACH</b>	<b>1/8" O-RING SEAL</b>	
<b>ITEM DESCRIPTION</b>	<b>303 STAINLESS</b>	<b>316 STAINLESS</b>
LOW PRESSURE 1/8" NPSF PLAIN NUT W/ 1/4" APERTURE	BOF-LP-303-ORS-L	BOF-LP-316-ORS-L
LOW PRESSURE 1/8" NPSF SPUD NUT W/ 1/4" APERTURE	BOF-LP-303R-ORS-L	BOF-LP-316R-ORS-L
HIGH PRESSURE 1/8" NPSF PLAIN NUT W/ 1/8" APERTURE	BOF-HP-303-ORS-L	BOF-HP-316-ORS-L
HIGH PRESSURE 1/8" NPSF SPUD NUT W/ 1/8" APERTURE	BOF-HP-303R-ORS-L	BOF-HP-316R-ORS-L

**BLOWOUT FITTING WITH SPUD NUT**



**NOTE: RUPTURE DISK NOT INCLUDED—SEE PAGE 7**

TRABON IS A REGISTERED TRADEMARK OF GRACO, INC.  
LINCOLN IS A REGISTERED TRADEMARK OF LINCOLN INDUSTRIAL

**ORDERING INFORMATION & PART NUMBERS**



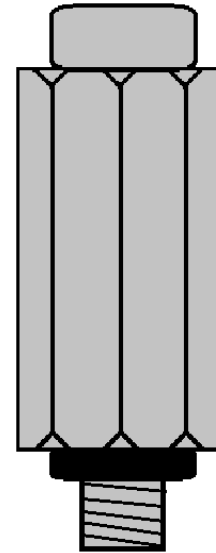
STANDARD PACK: 25 EACH				
DISC COLOR	DISK DIAMETER	LOW PRESSURE BURST (PSI) (1/4" APERTURE FITTING)	HIGH PRESSURE BURST (PSI) (1/8" APERTURE FITTING)	PART NUMBER
BLACK	3/8"	900	NOT OBSERVED	A509-276-000
GREEN	3/8"	1,175	NOT OBSERVED	A509-277-000
RED	3/8"	1,750	4,600	A509-279-000
ORANGE	3/8"	2,050	5,500	A509-280-000
ALUMINUM	3/8"	2,350	N/R	A509-281-000
PINK	3/8"	2,650	6,400	A509-282-000
BLUE	3/8"	2,950	7,300	A509-283-000
PURPLE	3/8"	3,250	8,200	A509-284-000
YELLOW	11/16"	1,450	3,700	A509-292-000
RED	11/16"	1,750	NOT OBSERVED	A509-293-000
ORANGE	11/16"	2,050	NOT OBSERVED	A509-294-000
SILVER	11/16"	2,350	NOT OBSERVED	A509-295-000
PINK	11/16"	2,650	NOT OBSERVED	A509-296-000
BLUE	11/16"	2,950	NOT OBSERVED	A509-297-000
PURPLE	11/16"	3,250	NOT OBSERVED	A509-298-000

NOTE: ALL DISKS HAVE A RUPTURE TOLERANCE OF +500 PSI

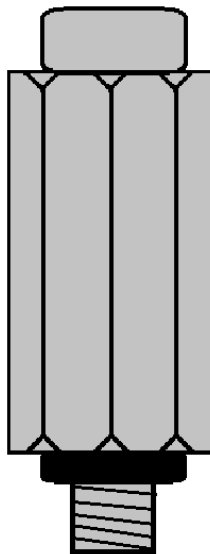
**ORDERING INFORMATION & PART NUMBERS**

**ATMOSPHERIC RESET INDICATOR TRABON STYLE**

STANDARD PACK: 5 EACH	1/8" O-RING SEAL OR 1/8" NPTF THREADS	
ITEM DESCRIPTION	303 STAINLESS	316 STAINLESS
1,000 PSI	L5081000-NPTF L5081000-ORS	L5081000-316-NPTF L5081000-316-ORS
1,500 PSI	L5081500-NPTF L5081500-ORS	L5081500-316-NPTF L5081500-316-ORS
2,000 PSI	L5082000-NPTF L5082000-ORS	L5082000-316-NPTF L5082000-316-ORS
2,500 PSI	L5082500-NPTF L5082500-ORS	L5082500-316-NPTF L5082500-316-ORS
3,000 PSI	L5083000-NPTF L5083000-ORS	L5083000-316-NPTF L5083000-316-ORS



**ATMOSPHERIC RESET INDICATOR FOR LINCOLN MC2 DIVIDER VALVES**



STANDARD PACK: 5 EACH	1/8" O-RING SEAL	
ITEM DESCRIPTION	303 STAINLESS	316 STAINLESS
1,000 PSI	L5081000-ORS-L	L5081000-316-ORS-L
1,500 PSI	L5081500-ORS-L	L5081500-316-ORS-L
2,000 PSI	L5082000-ORS-L	L5082000-316-ORS-L
2,500 PSI	L5082500-ORS-L	L5082500-316-ORS-L
3,000 PSI	L5083000-ORS-L	L5083000-316-ORS-L

TRABON IS A REGISTERED TRADEMARK OF GRACO, INC.

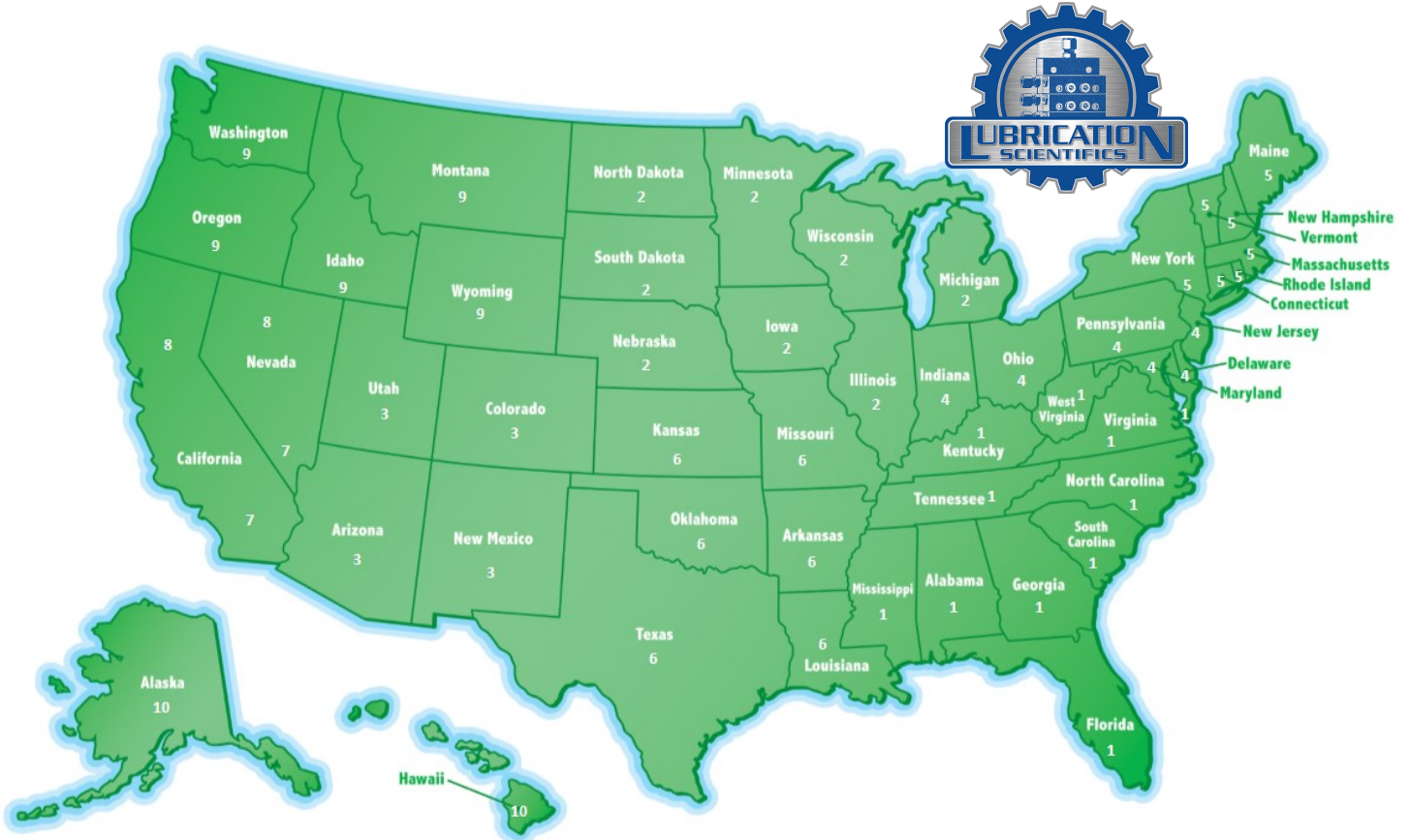
LINCOLN IS A REGISTERED TRADEMARK OF LINCOLN INDUSTRIAL





CONTACT US

IN THE USA, FIND YOUR STATE IN THE MAP BELOW, LOOK FOR THE REGION ID NUMBER AND FIND THAT NUMBER IN THE CONTACT INFORMATION CHART.



CONTACT INFORMATION CHART

1	Call Factory Direct - 877-452-0157		
2	David Donahue Cell: 414-507-9513 Email: d.donahue@lubricationscientifics.com	Outside of the United States	Call Factory Direct - 877-452-0157
3	Bernie Sauve + El Paso Texas Cell: 210-702-9930 Email: bernie@lubricationscientifics.com	7	Richard Hanley - <b>California</b> - Santa Barbara, Ventura, Los Angeles, Orange, San Bernardino, Riverside, San Diego and Imperial Counties. <b>Nevada</b> - Clark County. Cell: 714-625-5539 Email: rth@lubricationscientifics.com
4	Andy Kromer Cell: 440-364-4721 Email: akclub@lubricationscientifics.com	8	<b>California</b> - All Counties not covered by Richard. <b>Nevada</b> - All Counties except Clark County. Call Factory Direct - 877-452-0157
5	Call Factory Direct - 877-452-0157	9	Call Factory Direct - 877-452-0157
6	Cory Walker Cell: 832-585-7065 Email: c.walker@lubricationscientifics.com	10	Call Factory Direct - 877-452-0157

**Customer Service (877-452-0157)**

- ◆ Order status & order entry
- ◆ Pricing inquiries
- ◆ Part number look-ups
- ◆ Product availability information
- ◆ Shipment assistance
- ◆ All other general inquires

**www.lubricationsscintifics.com**

- ◆ Product information, specifications, literature
- ◆ Locate sales reps and distributors
- ◆ Operator & Repair manuals
- ◆ Distributer Information
- ◆ Place orders and check current pricing
- ◆ Product Pricing



LUBRICATION SCIENTIFICS, LLC

17651 ARMSTRONG AVE.

IRVINE, CA 92614

UNITED STATES OF AMERICA

TOLL FREE TEL: (877) 452-0157, LOCAL TEL: (714) 557-0664, FAX: (714) 546-4564

**WWW.LUBRICATIONSCIENTIFICS.COM**