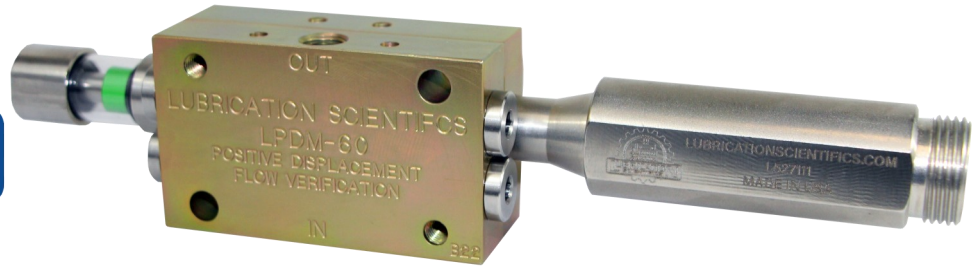


CRITICAL LUBE POINT FLOW VERIFICATION



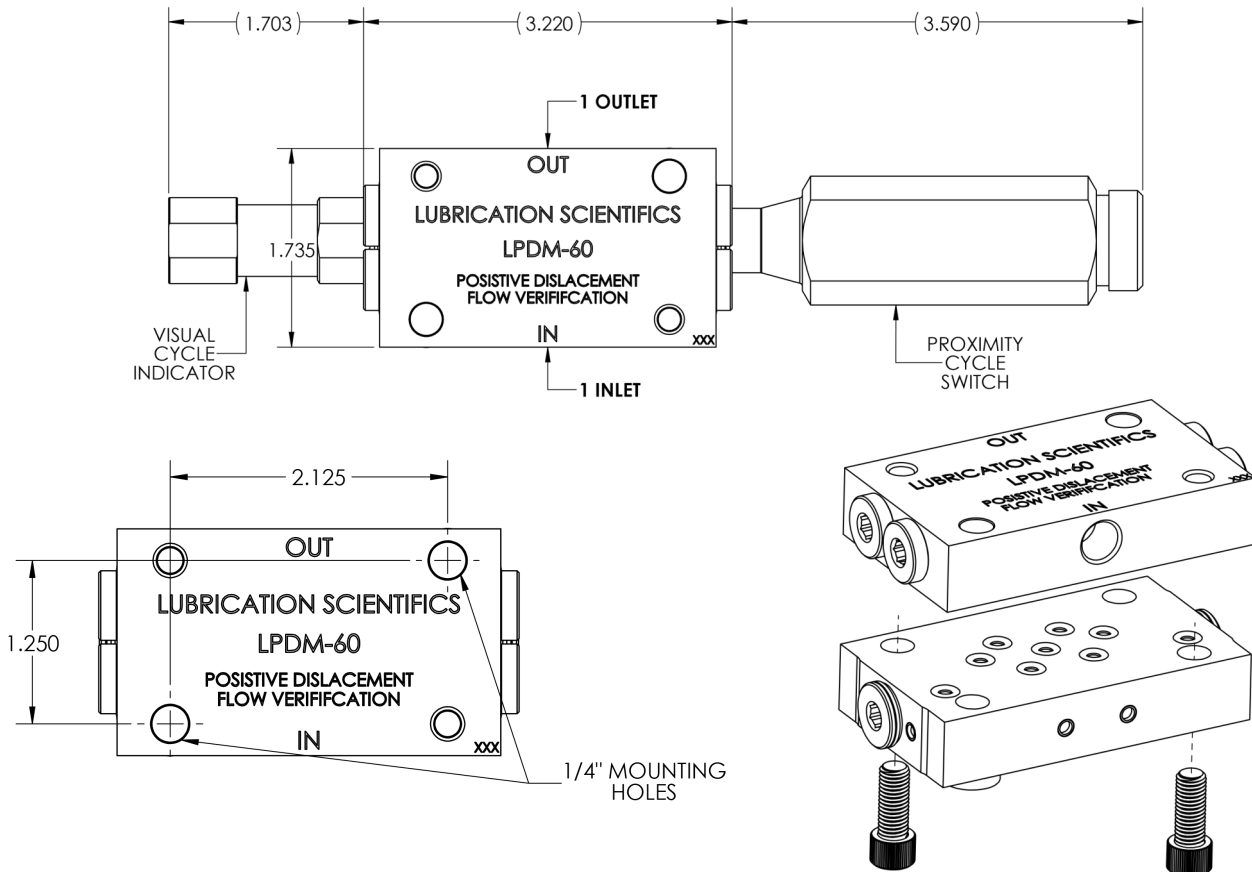
BENEFITS AND FEATURES:

- Hydraulic operation means no electronics to fail.
- Feedback options include VCI and Proximity Switches.
- **Monitors critical points in ANY lubrication system.**
- .060 CU cycle volume.
- Positive Flow Displacement Flow Verification Device.
- Ideal for monitoring critical points in Single Line, Dual Line and Series Progressive Systems.
- 1 inlet 1 outlet Hydraulic operation.
- Plated carbon steel body with stainless steel fittings (Stainless steel body available upon request).



TECHNICAL DATA

GENERAL:	The meter is of hydraulic spool operation, with pistons moving in series to create pulses on a proximity switch or VCI.
DIMENSIONS:	Excludes connector (L x W x H): IN 3.22 x 1.305 x 1.735 / MM 81 x 33 x 44
CONNECTION:	1/8"-27 NPSF
MATERIAL:	Plated Carbon Steel (Available in 316/303 SS)
MAXIMUM OPERATING PRESSURE:	5,000 PSI / 345 BAR
WEIGHT (APPROX):	Carbon Steel: 1.8 lbs / 0.816 kg 316 SS: 1.4 lbs / 0.675 kg
ACCURACY:	Grease NLGI 2: 0.060 cu in/pulse \pm 3% / 0.983 cu mm/pulse \pm 3% Oil ISO VG 150: 0.060 cu in/pulse \pm 3% / 0.983 cu mm/pulse \pm 3%



ACCESSORIES

PROXIMITY SWITCHES



STANDARD PACK: 1 CABLE	
ITEM DESCRIPTION	12' CABLE PART NUMBER
12' 3 PIN CABLE	L527251-CBL12
12' 4 PIN CABLE	L527112-CBL12
12' 5 PIN CABLE	L527111-CBL12

PROXIMITY SWITCH SPECIFICATIONS

Specification Description

All Proximity Switches are field sensitive, dry contact, with ceramic magnets. They have a max cycle rate of 200 cycles per minute. A max pressure rating of 7,500 psi.

Electrical rating are as follows for all models:

4 Amps @ 120V AC, 2 Amps @ 240V DC, 3 Amps @ 24V DC, .5 Amps @ 125V DC

CYCLE LIFE:

150,000,000 Cycles



VISUAL CYCLE INDICATOR

Valve Cycle Indicator Function



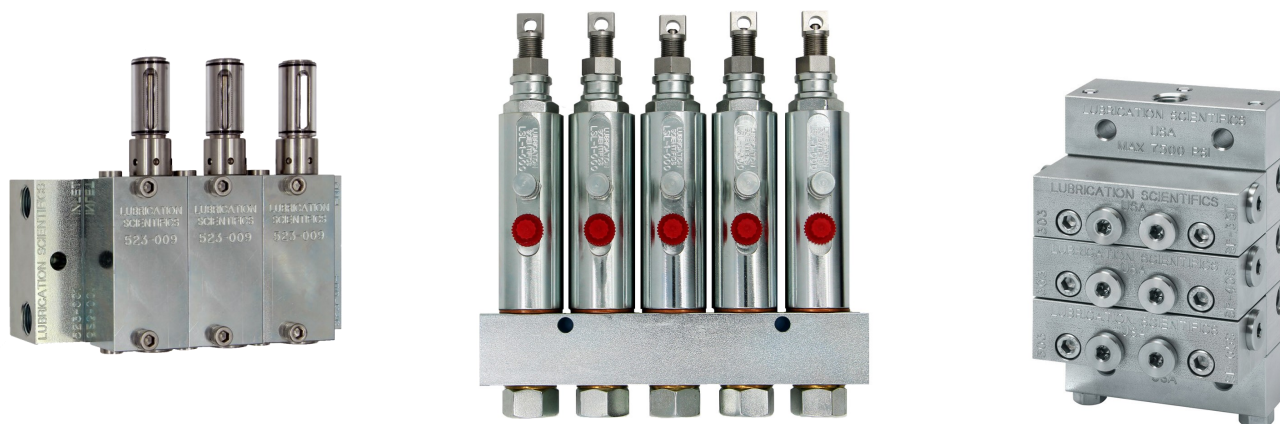
Cycle Indicators provide a visual means to verify proper function of a piston cycle.

Figure 1.1: During a lube event, the piston acts upon the actuator pin pushing the indicator forward, showing that the valve is functioning properly.

Figure 1.2: When the piston cycles back to its original position, the spring in the visual indicator returns the indicator bead to its previous position and awaits the next cycle.

During a lube event, you will have a visual indication if the valves are not cycling.

OPERATION



SINGLE LINE SYSTEM

Install this device between an Injector and a Critical Lube Point. When the Injector dispenses $.06\text{in}^3$ of lubricant, the LPDM will cycle and give feedback through desired option. Can be installed on a Single Line System from any manufacturer.

DUAL LINE SYSTEM

Install this device between a Dual Line Valve outlet and a Critical Lube Point. When the Dual Line Valve dispenses $.06\text{in}^3$ of lubricant, the LPDM will cycle and give feedback through desired option. Can be installed on a Dual Line System from any manufacturer.

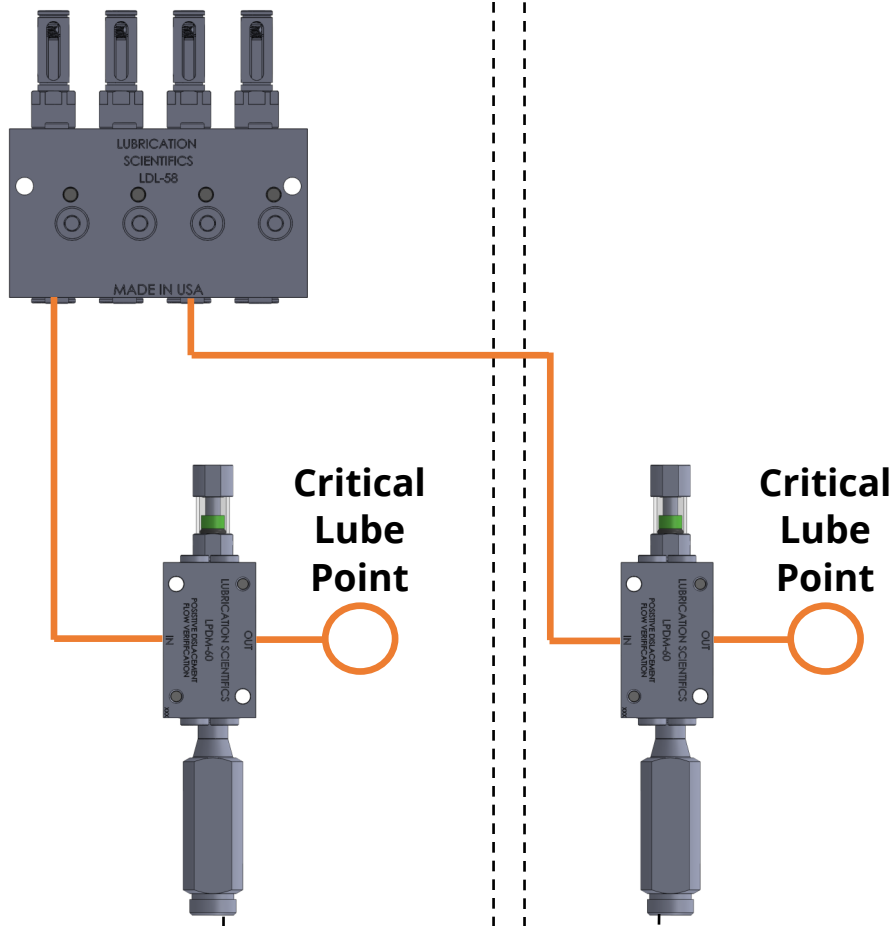
SERIES PROGRESSIVE SYSTEM

Install this device between a Divider Valve outlet and a Critical Lube Point. When the Divider Valve dispenses $.06\text{in}^3$ of lubricant, the LPDM will cycle and give feedback through desired option. Can be installed on a Dual Line System from any manufacturer.

LDPM STANDALONE MONITORING

LSC-100A:

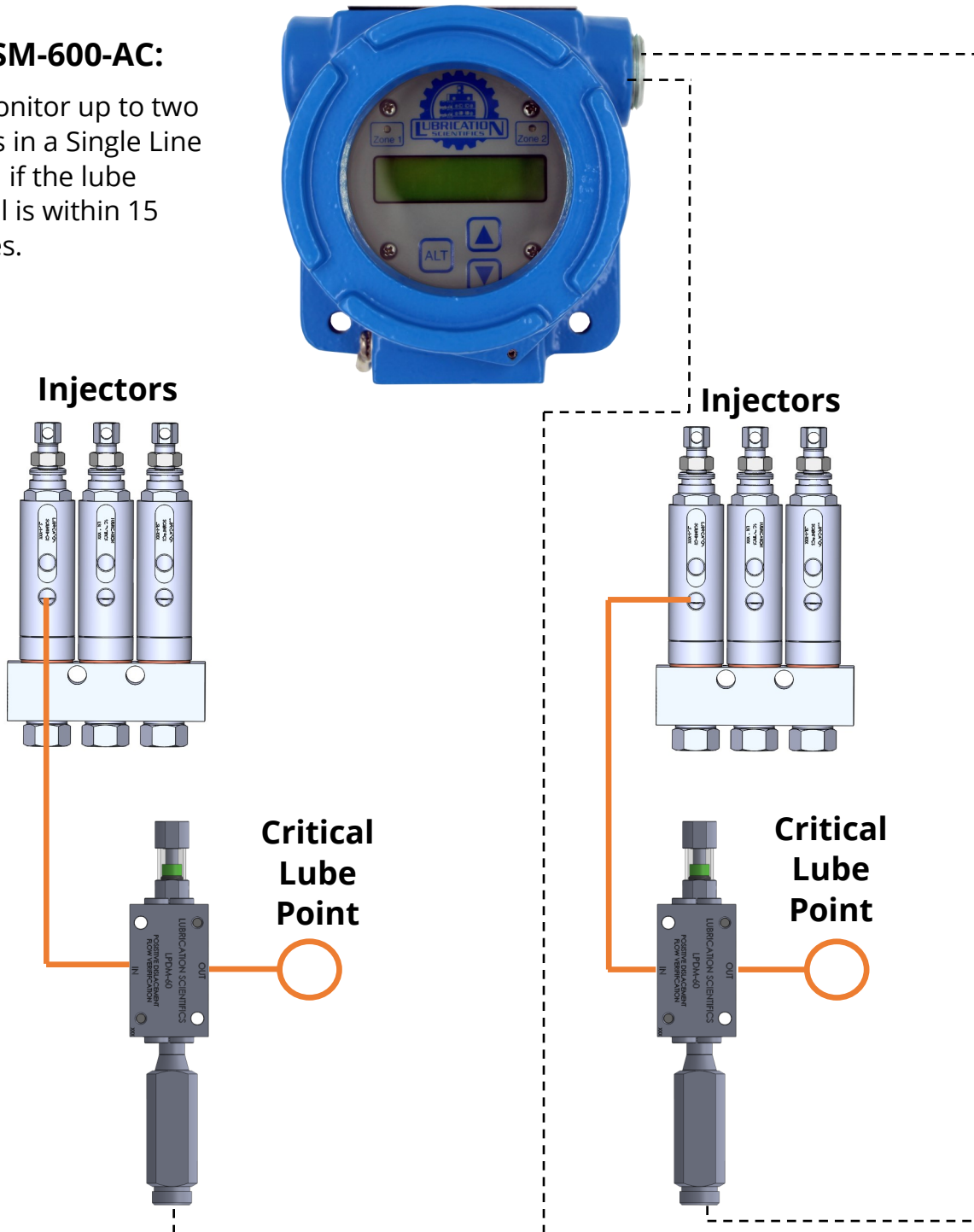
Can monitor up to two devices in Dual Line and Series Progressive systems. Only one device can be monitored in Single Line systems. No interval limitation.



LDPM STANDALONE MONITORING OPTIONS

LSM-600-AC:

Can monitor up to two devices in a Single Line system if the lube Interval is within 15 minutes.



CONTACT US
SERVICING ALL 50 STATES AND ALL INTERNATIONAL TERRITORIES. TO FIND A SALES REP IN YOUR AREA PLEASE CONTACT OUR MAIN OFFICE.



Customer Service (877-452-0157)

- ◆ Order status & order entry
- ◆ Pricing inquiries
- ◆ Part number look-ups
- ◆ Product availability information
- ◆ Shipment assistance
- ◆ All other general inquires

www.lubricationscientifics.com

- ◆ Product information, specifications, literature
- ◆ Locate sales reps and distributors
- ◆ Operator & Repair manuals
- ◆ Distributer Information
- ◆ Place orders and check current pricing
- ◆ Product Pricing



LUBRICATION SCIENTIFICS, LLC
17651 ARMSTRONG AVE.
IRVINE, CA 92614
UNITED STATES OF AMERICA

TOLL FREE TEL: (877) 452-0157, LOCAL TEL: (714) 557-0664, FAX: (714) 546-4564

WWW.LUBRICATIONSCIENTIFICS.COM