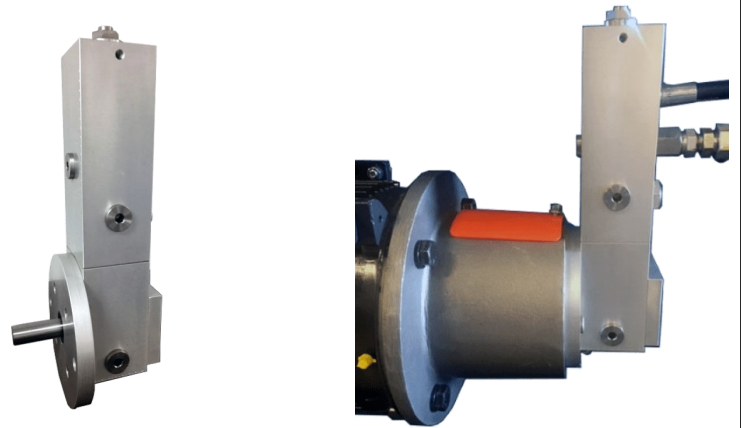


LJP SINGLE—LUBRICATION PUMP



BENEFITS & ADVANTAGES

- THREE PISTON SIZES AVAILABLE, EITHER FIXED OR ADJUSTABLE OUTPUTS, FOR LARGE OUTPUT RANGES.
- PUMP WITH 3/16" DIAMETER PISTON CAN OPERATE UP TO 10,000 PSI
- SIMPLIFIED, PATENT PENDING, DESIGN WITH LESS THAN HALF THE INTERNAL COMPONENTS OF COMPETITIVE PUMPS.
- DISCHARGE PISTON AND LOWER PLUNGER ARE LOCKED TOGETHER, BUT ARE FREE TO ROTATE 360° ELIMINATING NEED FOR KEY OR PIN.
- AIR BLEED PLUG AT TOP OF CYLINDER ASSEMBLY.
- EXTERNAL PUMP OUTPUT ADJUSTMENT ON ADJUSTABLE OUTPUT TYPES.
- ADAPTERS AVAILABLE FOR MOUNTING TO VARIOUS SIZE FOOTED "C" FACE MOTORS

READY FOR IMMEDIATE SHIPMENT

MADE IN



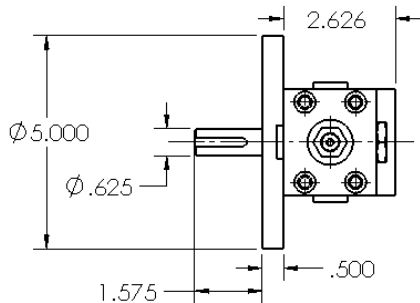
WWW.LUBRICATIONSCIENTIFICS.COM

LJP SINGLE ORDERING GUIDE/SPECIFICATIONS

LJP-S-X-XX		LJP-S-X-XX	
TYPE	P/N	OUTPUT SIZE:	P/N
FIXED OUTPUT:	F	3/16 DIA	19
ADJUSTABLE OUTPUT	A	1/4 DIA	25
		3/8 DIA	38

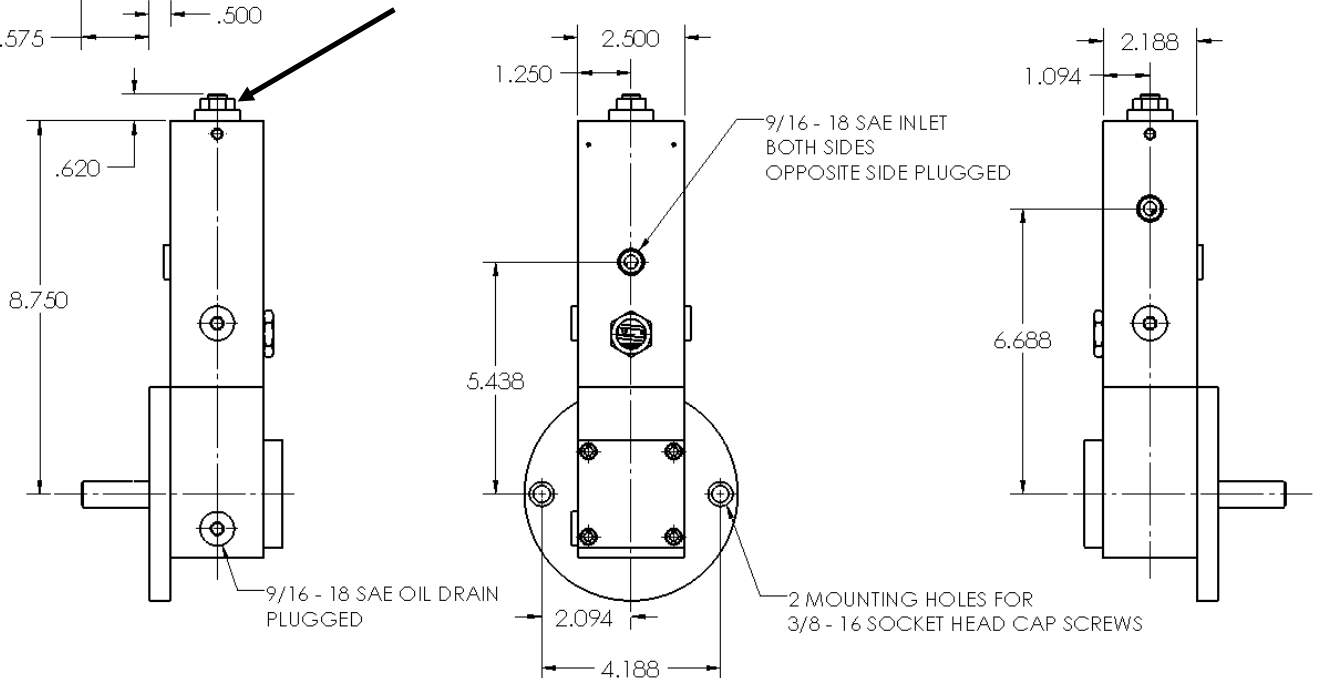
OUTPUT SPECIFICATIONS

PLUNGE R SIZE	MIN OUTPUT PER STROKE	MAX OUTPUT PER STROKE	OUTPUT CHANGE PER 1/4 ROTATION OF CYL.	MAXIMUM CONTINUOUS	MAXIMUM INTERMITTENT PRESSURE
19	.0015 CU IN	.006 CU IN	.0005 CU. IN. .008 CC	10,000 PSI 690 BAR	12,000 PSI 827 BAR
25	.0030 CU IN	.0125 CU IN	.0009 CU. IN. .014 CC	6,000 PSI 414 BAR	8,000 PSI 552 BAR
38	.0065 CU IN	.026 CU IN	.0019 CU. IN. .031 CC	3,500 PSI 241 BAR	6,000 PSI 414 BAR



ADJUSTMENT INSTRUCTIONS:

WITH CYLINDER BOTTOMED OUT ON PUMP HOUSING THE PUMP IS AT MAXIMUM OUTPUT. LOOSEN THE SET SCREW AND ROTATE COUNTER CLOCKWISE TO REDUCE OUTPUT TO A MAXIMUM GAP OF .190 FOR MINIMUM OUTPUT. RE-TIGHTEN SET SCREW AFTER ADJUSTMENT.



LJP SINGLE PUMP REPAIR/REPLACEMENT PARTS

MASTER PUMP REPAIR KIT



PUMP REPAIR KIT



LOWER PLUNGER KIT



PART NUM-	ASSEMBLY DESCRIPTION
LJP-MPE19	MASTER PUMP KIT, 3/16 PISTON ADJUSTA-
LJP-MPE25	MASTER PUMP KIT, 1/4 PISTON ADJUSTA-
LJP-MPE38	MASTER PUMP KIT, 3/8 PISTON ADJUSTA-
LJP-RPE19	PUMP REPAIR KIT, 3/16 PISTON ADJUSTA-
LJP-RPE25	PUMP REPAIR KIT, 1/4 PISTON ADJUSTABLE
LJP-RPE35	PUMP REPAIR KIT, 3/8 PISTON ADJUSTABLE
LJP-RPKU	LOWER PLUNGER REPAIR KIT, ALL
LJP-MPE19-F	MASTER PUMP KIT, 3/16 PISTON FIXED
LJP-MPE25-F	MASTER PUMP KIT, 1/4 PISTON FIXED
LJP-MPE38-F	MASTER PUMP KIT, 3/8 PISTON FIXED
LJP-RPE19-F	PUMP REPAIR KIT, 3/16" FIXED
LJP-RPE25-F	PUMP REPAIR KIT, 1/4" FIXED
LJP-RPE38-F	PUMP REPAIR KIT, 3/8" FIXED

LJP SINGLE — PROCEDURE TO REPLACE LJP PUMP CYLINDER ASSEMBLY

- SHUT OFF THE OIL SUPPLY TO THE PUMP.
- REMOVE THE DRAIN PLUG AND DRAIN THE OIL FROM THE LOWER PUMP HOUSING
- MEASURE AND RECORD THE SPACE BETWEEN THE TOP OF THE PUMP HOUSING AND THE BOTTOM OF THE CYLINDER HEAD FOR ADJUSTABLE OUTPUT PUMP.
- LOOSEN THE SETSCREW LOCKING THE CYLINDER IN PLACE.
- REMOVE THE SCREWS HOLDING THE UPPER AND LOWER PUMP HOUSING TOGETHER.
- LIFT THE UPPER HOUSING AND DISCONNECT PISTON FROM LOWER PLUNGER.
- FOR ADJUSTABLE OUTPUT PUMP ROTATE THE CYLINDER COUNTER CLOCKWISE TO REMOVE.
- FOR FIXED OUTPUT PUMP PUSH THE CYLINDER OUT FROM THE BOTTOM END.
- INSTALL NEW CYLINDER ASSEMBLY IN TO THE UPPER HOUSING AND TIGHTEN SETSCREW. FOR ADJUSTABLE OUTPUT TYPE SET THE HEIGHT TO THE PREVIOUSLY MEASURED SPACE.
- SLIDE PISTON INTO LOWER PLUNGER AND REATTACH THE UPPER HOUSING TO THE LOWER HOUSING.
- FILL LOWER HOUSING WITH OIL TO CENTER OF SITE GAGE.
- TURN ON OIL SUPPLY AND BLEED PUMP OF AIR.

LJP SINGLE PUMP TROUBLE SHOOTING

PROBLEM	POSSIBLE CAUSE	CORRECTIVE ACTION
NO OUTPUT	<ul style="list-style-type: none"> • AIR IN PUMP • OIL SUPPLY EMPTY 	<ul style="list-style-type: none"> • REMOVE AIR BLEED PLUG UNTIL AIR FREE OIL IS COMING OUT • FILL RESERVOIR AND BLEED AIR TO PUMP INLET
WILL NOT BUILD PRESSURE	<ul style="list-style-type: none"> • AIR IN PUMP • CONTAMINATION 	<ul style="list-style-type: none"> • BLEED AIR PER ABOVE • REMOVE AIR BLEED PLUG AND LOOSEN CHECK VALVE RETAINER APPROXIMATELY FIVE TURNS AND LET PUMP RUN FOR A FEW STROKES. IF THIS DOES NOT WORK THE CYLINDER ASSEMBLY MAY NEED TO BE REPLACED.
LOW PUMP OUTPUT	<ul style="list-style-type: none"> • AIR IN PUMP • CONTAMINATION • HIGH OIL VISCOSITY 	<ul style="list-style-type: none"> • BLEED PER ABOVE • REMOVE PER ABOVE. • VERIFY OIL SUPPLY AT PUMP INLET. IF NOT ADEQUATE THE OIL SUPPLY MAY NEED TO BE PRESSURIZED

CONTACT US

IN THE USA, FIND YOUR STATE IN THE MAP BELOW, LOOK FOR THE REGION ID NUMBER AND FIND THAT NUMBER IN THE CONTACT INFORMATION CHART.



1	Call Factory Direct - 877-452-0157	7	Richard Hanley - California - Santa Barbara, Ventura, Los Angeles, Orange, San Bernardino, Riverside, San Diego and Imperial Counties. Nevada - Clark County. Cell: 714-625-5539 Email: rth@lubricationscientifics.com
2	Call Factory Direct - 877-452-0157	8	California - All Counties not covered by Richard. Nevada - All Counties except Clark County. Call Factory Direct - 877-452-0157
3	Call Factory Direct - 877-452-0157	9	Call Factory Direct - 877-452-0157
4	Andy Kromer Cell: 440-364-4721 Email: aklub@lubricationscientifics.com	10	Call Factory Direct - 877-452-0157
5	Call Factory Direct - 877-452-0157		
6	Cory Walker Cell: 832-585-7065 Email: c.walker@lubricationscientifics.com		

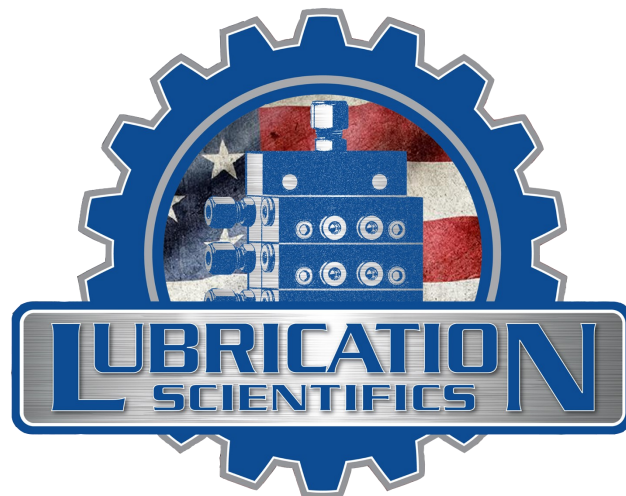
Outside of the United States	Call Factory Direct - 877-452-0157
------------------------------	------------------------------------

Customer Service (877-452-0157)

- ◆ Order status & order entry
- ◆ Pricing inquiries
- ◆ Part number look-ups
- ◆ Product availability information
- ◆ Shipment assistance
- ◆ All other general inquires

www.lubricationscientifics.com

- ◆ Product information, specifications, literature
- ◆ Locate sales reps and distributors
- ◆ Operator & Repair manuals
- ◆ Distributer Information
- ◆ Place orders and check current pricing
- ◆ Product Pricing



LUBRICATION SCIENTIFICS, LLC

17651 ARMSTRONG AVE.

IRVINE, CA 92614

UNITED STATES OF AMERICA

TOLL FREE TEL: (877) 452-0157, LOCAL TEL: (714) 557-0664, FAX: (714) 546-4564

WWW.LUBRICATIONSCIENTIFICS.COM